



- 1** Private Rooftop Terraces
 Entertain guests or enjoy some quiet downtime outdoors on your private Rooftop Terrace. This additional living and entertaining space comes standard with every two-story townhome.
- 2** Smartly Designed Interiors
 Innovative designs maximize all interior spaces while delivering a modern, clean aesthetic. Open concept layouts create a sense of even greater space, by allowing one room to transition seamlessly into the next. Exceptional and uncompromising craftsmanship is evident at every turn – from every finish selected to every design detail.
- 3** Chef Inspired Kitchens
 Open concept kitchens feature designer-selected, extended kitchen cabinetry with islands and your choice of granite or quartz countertop. Other modern accents include ceramic tile backsplash, under mount sink with single lever faucet and sleek stainless steel appliances.
- 4** Beautiful Bathrooms
 Bathrooms feature designer cabinetry, cultured marble countertop, walk-in framed glass shower, and contemporary ceramic and porcelain tiles.
- 5** Secure Underground Parking
 Visitors have access to well-lit and secure underground parking; residents enjoy an extra level of security via keypad access. Both levels feature security cameras and elevators to whisk you quickly to ground level.

Designed for Living

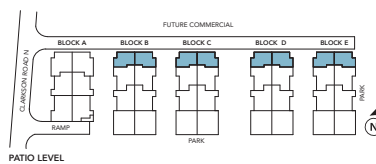
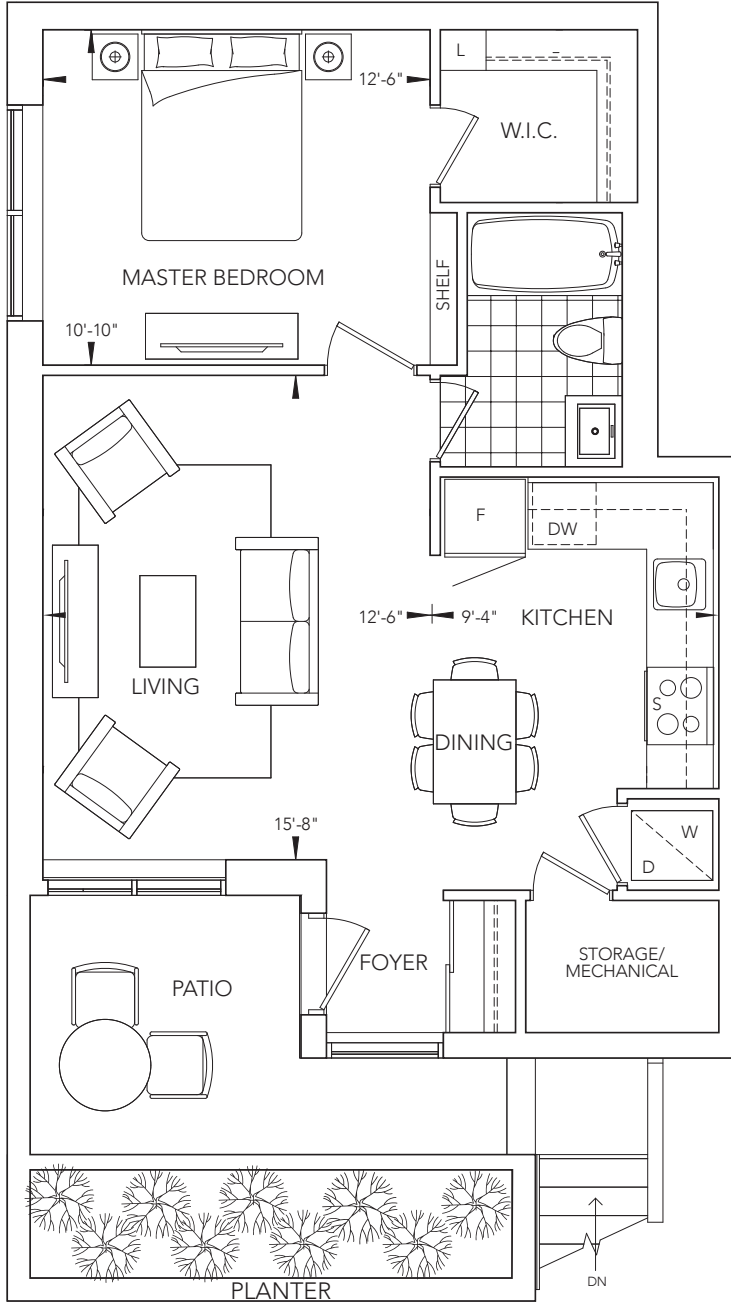


PATIO SUITE

The Sutherland 710 sq.ft.
 73 sq.ft. Patio



The Sutherland 710 sq.ft.
73 sq.ft. Patio





- 1** Private Rooftop Terraces
 Entertain guests or enjoy some quiet downtime outdoors on your private Rooftop Terrace. This additional living and entertaining space comes standard with every two-story townhome.
- 2** Smartly Designed Interiors
 Innovative designs maximize all interior spaces while delivering a modern, clean aesthetic. Open concept layouts create a sense of even greater space, by allowing one room to transition seamlessly into the next. Exceptional and uncompromising craftsmanship is evident at every turn – from every finish selected to every design detail.
- 3** Chef Inspired Kitchens
 Open concept kitchens feature designer-selected, extended kitchen cabinetry with islands and your choice of granite or quartz countertop. Other modern accents include ceramic tile backsplash, under mount sink with single lever faucet and sleek stainless steel appliances.
- 4** Beautiful Bathrooms
 Bathrooms feature designer cabinetry, cultured marble countertop, walk-in framed glass shower, and contemporary ceramic and porcelain tiles.
- 5** Secure Underground Parking
 Visitors have access to well-lit and secure underground parking; residents enjoy an extra level of security via keypad access. Both levels feature security cameras and elevators to whisk you quickly to ground level.

Designed for Living

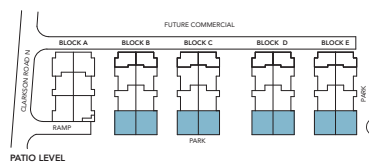
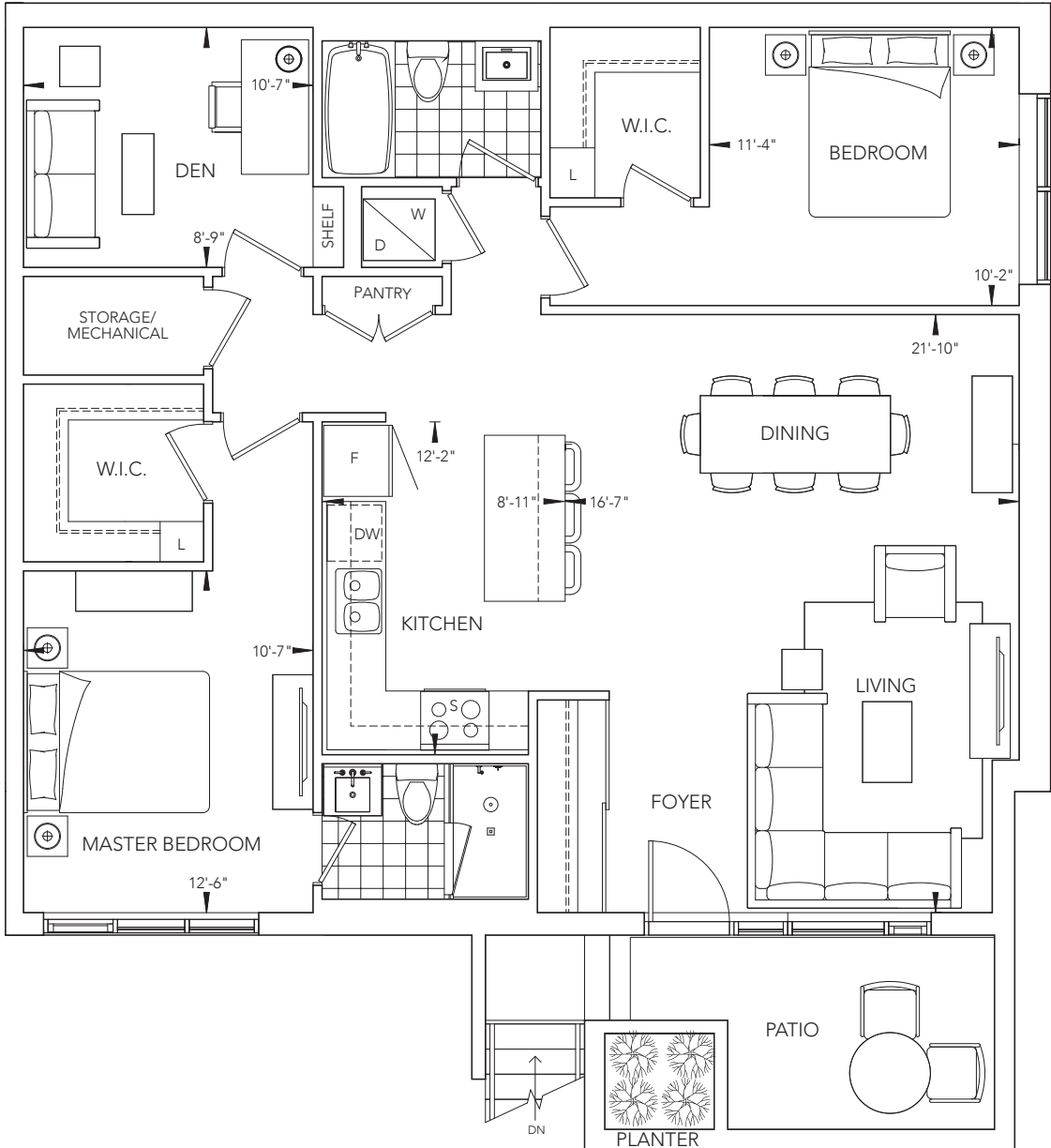
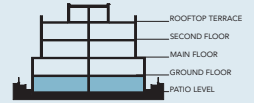


PATIO SUITE

The Truscott

1,294 sq.ft.
 68 sq.ft. Patio







- 1** Private Rooftop Terraces
 Entertain guests or enjoy some quiet downtime outdoors on your private Rooftop Terrace. This additional living and entertaining space comes standard with every two-story townhome.
- 2** Smartly Designed Interiors
 Innovative designs maximize all interior spaces while delivering a modern, clean aesthetic. Open concept layouts create a sense of even greater space, by allowing one room to transition seamlessly into the next. Exceptional and uncompromising craftsmanship is evident at every turn – from every finish selected to every design detail.
- 3** Chef Inspired Kitchens
 Open concept kitchens feature designer-selected, extended kitchen cabinetry with islands and your choice of granite or quartz countertop. Other modern accents include ceramic tile backsplash, under mount sink with single lever faucet and sleek stainless steel appliances.
- 4** Beautiful Bathrooms
 Bathrooms feature designer cabinetry, cultured marble countertop, walk-in framed glass shower, and contemporary ceramic and porcelain tiles.
- 5** Secure Underground Parking
 Visitors have access to well-lit and secure underground parking; residents enjoy an extra level of security via keypad access. Both levels feature security cameras and elevators to whisk you quickly to ground level.

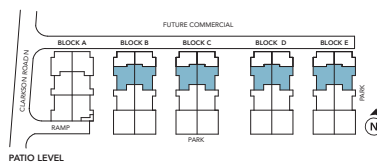
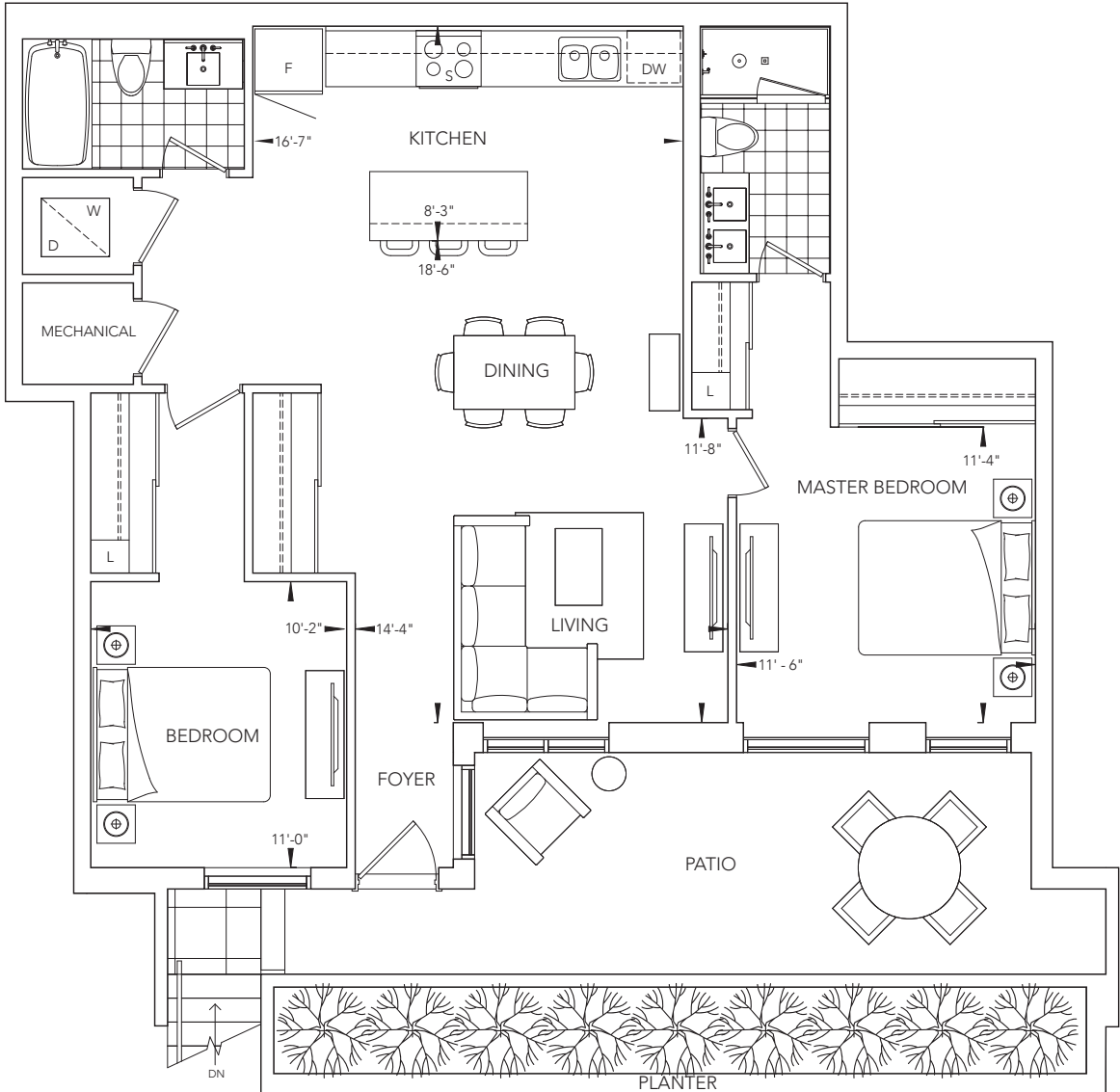
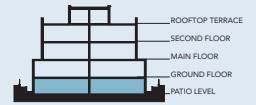
Designed for *Living*



PATIO SUITE

The Warren 1,087 sq.ft.
 192 sq.ft. Patio







- 1** Private Rooftop Terraces
 Entertain guests or enjoy some quiet downtime outdoors on your private Rooftop Terrace. This additional living and entertaining space comes standard with every two-story townhome.
- 2** Smartly Designed Interiors
 Innovative designs maximize all interior spaces while delivering a modern, clean aesthetic. Open concept layouts create a sense of even greater space, by allowing one room to transition seamlessly into the next. Exceptional and uncompromising craftsmanship is evident at every turn – from every finish selected to every design detail.
- 3** Chef Inspired Kitchens
 Open concept kitchens feature designer-selected, extended kitchen cabinetry with islands and your choice of granite or quartz countertop. Other modern accents include ceramic tile backsplash, under mount sink with single lever faucet and sleek stainless steel appliances.
- 4** Beautiful Bathrooms
 Bathrooms feature designer cabinetry, cultured marble countertop, walk-in framed glass shower, and contemporary ceramic and porcelain tiles.
- 5** Secure Underground Parking
 Visitors have access to well-lit and secure underground parking; residents enjoy an extra level of security via keypad access. Both levels feature security cameras and elevators to whisk you quickly to ground level.

Designed for Living



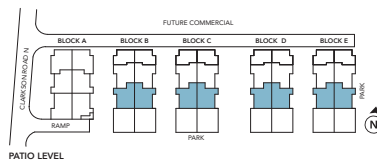
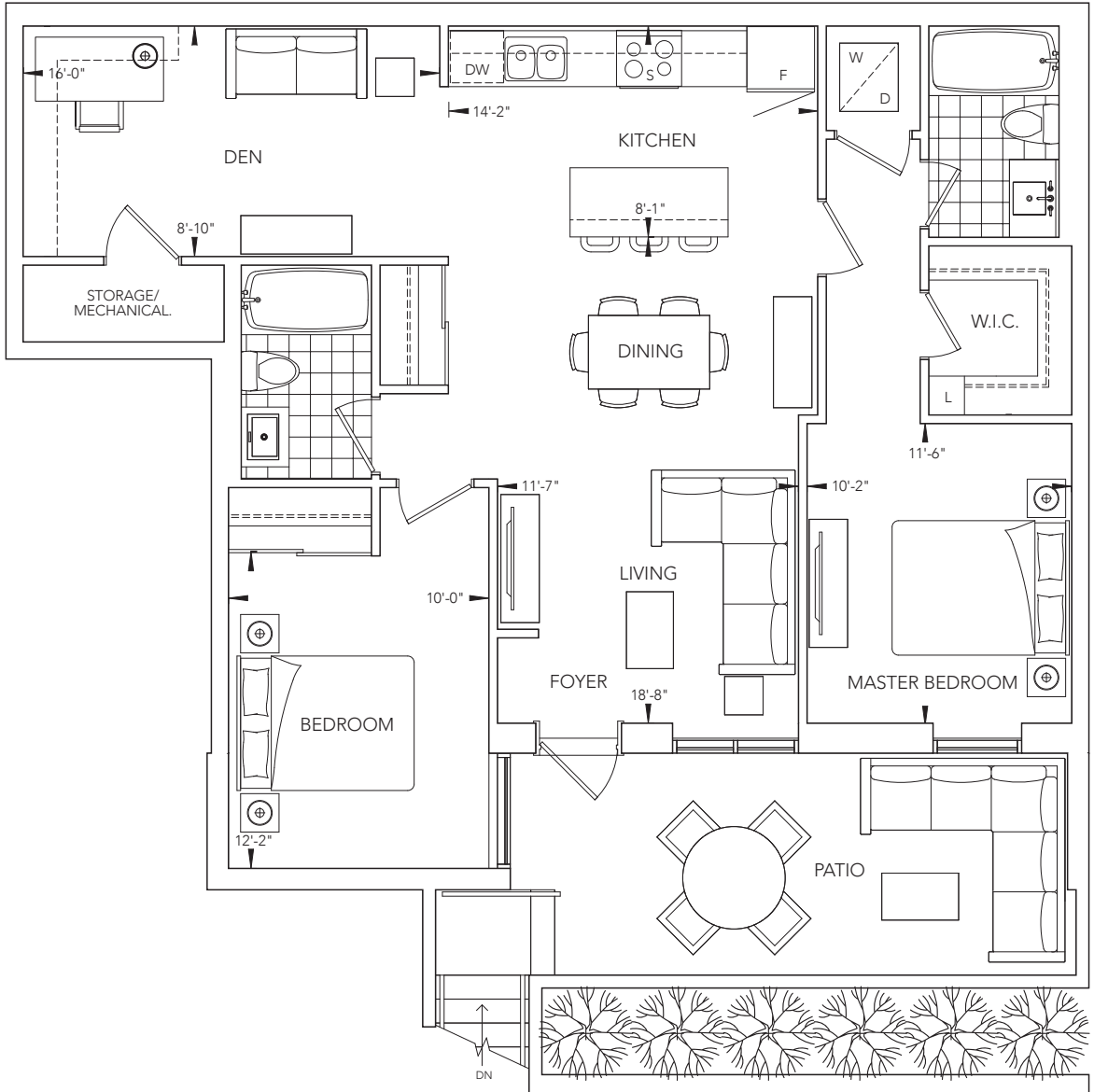
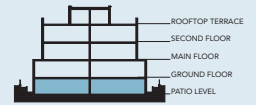
PATIO SUITE

The Clarkson

1,094 sq.ft.
 178 sq.ft. Patio



The Clarkson 1,094 sq.ft.
178 sq.ft. Patio





- 1** Private Rooftop Terraces
Entertain guests or enjoy some quiet downtime outdoors on your private Rooftop Terrace. This additional living and entertaining space comes standard with every two-story townhome.
- 2** Smartly Designed Interiors
Innovative designs maximize all interior spaces while delivering a modern, clean aesthetic. Open concept layouts create a sense of even greater space, by allowing one room to transition seamlessly into the next. Exceptional and uncompromising craftsmanship is evident at every turn – from every finish selected to every design detail.
- 3** Chef Inspired Kitchens
Open concept kitchens feature designer-selected, extended kitchen cabinetry with islands and your choice of granite or quartz countertop. Other modern accents include ceramic tile backsplash, under mount sink with single lever faucet and sleek stainless steel appliances.
- 4** Beautiful Bathrooms
Bathrooms feature designer cabinetry, cultured marble countertop, walk-in framed glass shower, and contemporary ceramic and porcelain tiles.
- 5** Secure Underground Parking
Visitors have access to well-lit and secure underground parking; residents enjoy an extra level of security via keypad access. Both levels feature security cameras and elevators to whisk you quickly to ground level.

Designed for *Living*



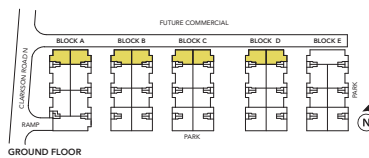
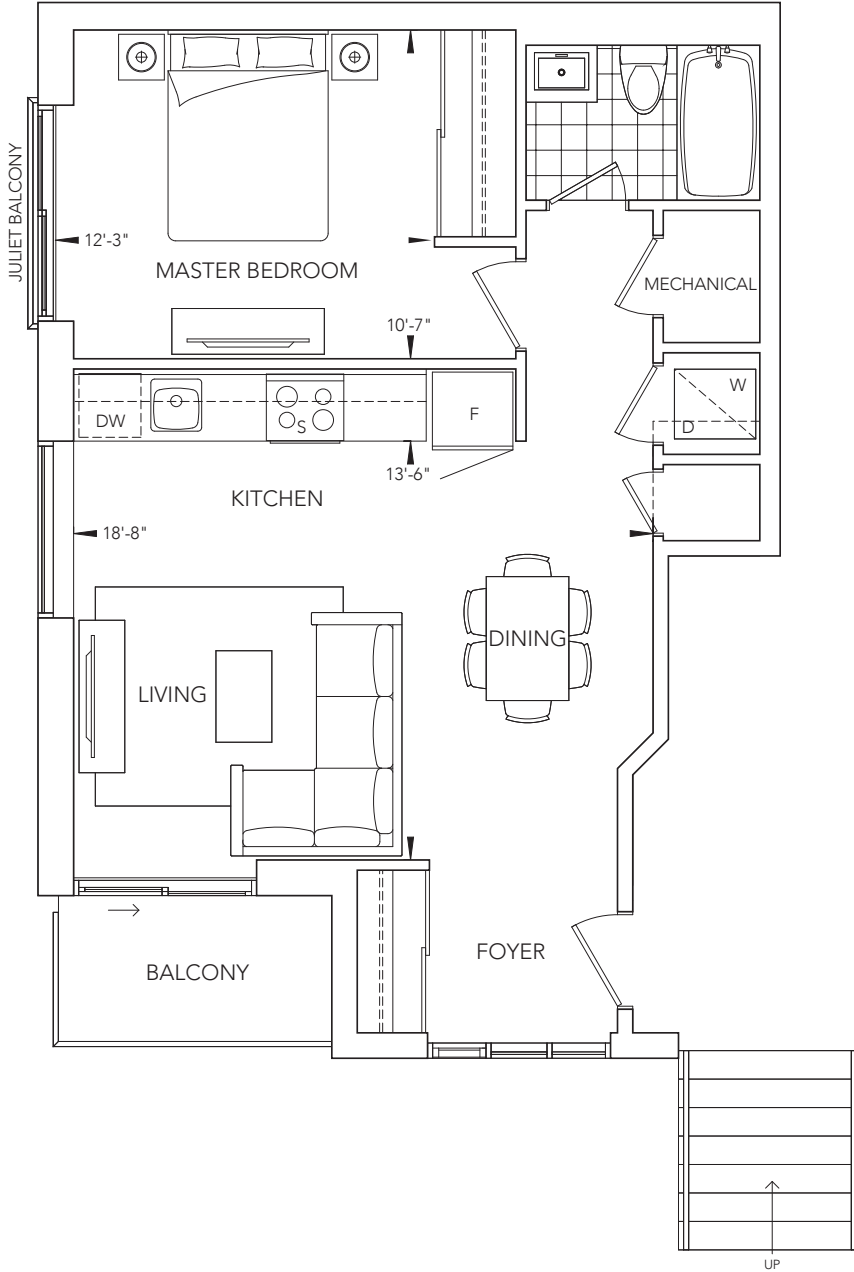
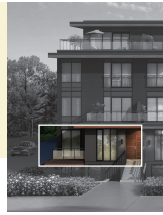
GROUND SUITE

The Henry

690 sq.ft.
42 sq.ft. Balcony



The Henry 690 sq.ft.
42 sq.ft. Balcony





- 1** Private Rooftop Terraces
 Entertain guests or enjoy some quiet downtime outdoors on your private Rooftop Terrace. This additional living and entertaining space comes standard with every two-story townhome.
- 2** Smartly Designed Interiors
 Innovative designs maximize all interior spaces while delivering a modern, clean aesthetic. Open concept layouts create a sense of even greater space, by allowing one room to transition seamlessly into the next. Exceptional and uncompromising craftsmanship is evident at every turn – from every finish selected to every design detail.
- 3** Chef Inspired Kitchens
 Open concept kitchens feature designer-selected, extended kitchen cabinetry with islands and your choice of granite or quartz countertop. Other modern accents include ceramic tile backsplash, under mount sink with single lever faucet and sleek stainless steel appliances.
- 4** Beautiful Bathrooms
 Bathrooms feature designer cabinetry, cultured marble countertop, walk-in framed glass shower, and contemporary ceramic and porcelain tiles.
- 5** Secure Underground Parking
 Visitors have access to well-lit and secure underground parking; residents enjoy an extra level of security via keypad access. Both levels feature security cameras and elevators to whisk you quickly to ground level.

Designed for *Living*

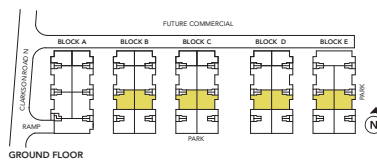
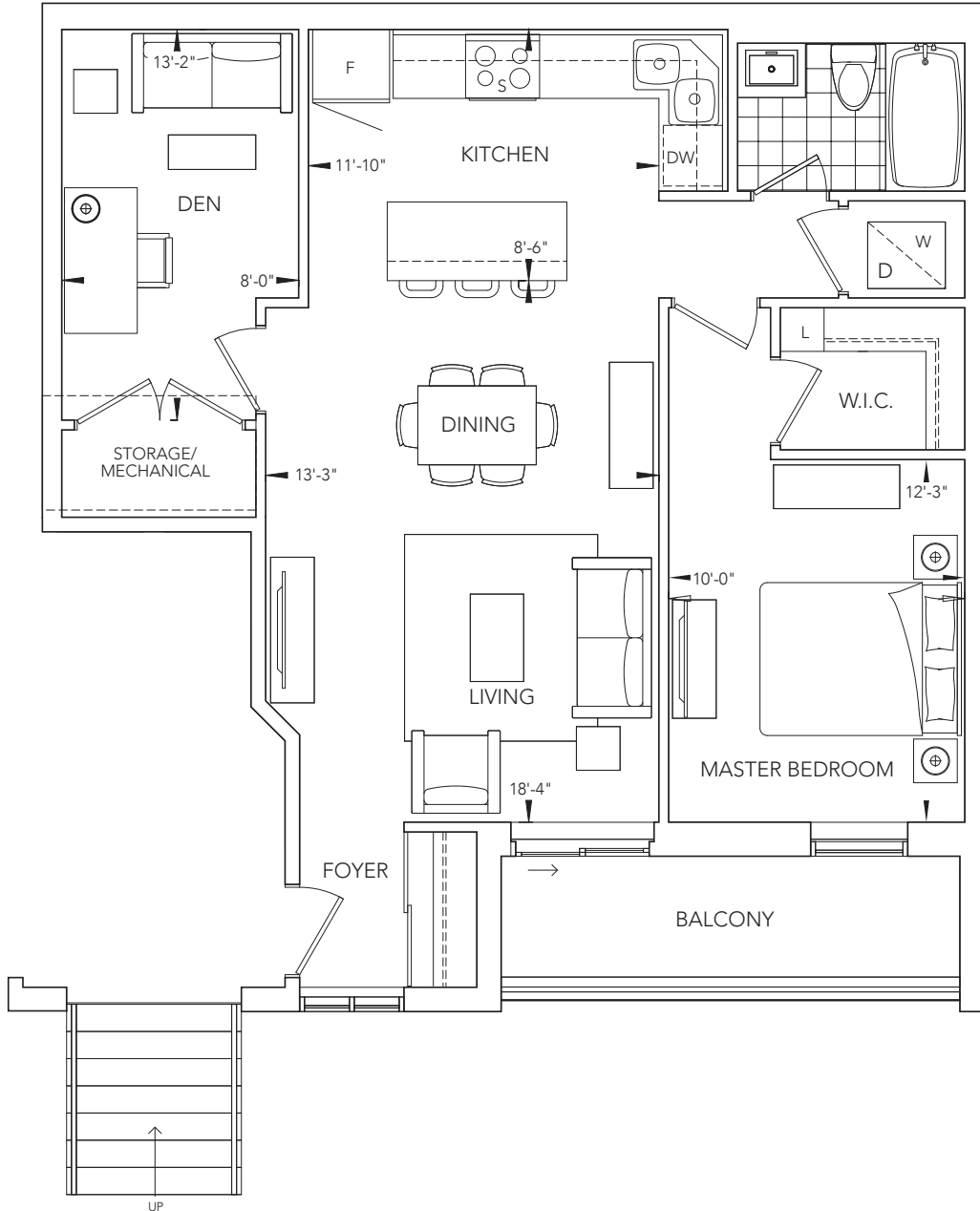
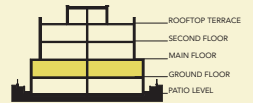


GROUND SUITE

The Neave

847 sq.ft.
 58 sq.ft. Balcony







- 1** Private Rooftop Terraces
 Entertain guests or enjoy some quiet downtime outdoors on your private Rooftop Terrace. This additional living and entertaining space comes standard with every two-story townhome.
- 2** Smartly Designed Interiors
 Innovative designs maximize all interior spaces while delivering a modern, clean aesthetic. Open concept layouts create a sense of even greater space, by allowing one room to transition seamlessly into the next. Exceptional and uncompromising craftsmanship is evident at every turn – from every finish selected to every design detail.
- 3** Chef Inspired Kitchens
 Open concept kitchens feature designer-selected, extended kitchen cabinetry with islands and your choice of granite or quartz countertop. Other modern accents include ceramic tile backsplash, under mount sink with single lever faucet and sleek stainless steel appliances.
- 4** Beautiful Bathrooms
 Bathrooms feature designer cabinetry, cultured marble countertop, walk-in framed glass shower, and contemporary ceramic and porcelain tiles.
- 5** Secure Underground Parking
 Visitors have access to well-lit and secure underground parking; residents enjoy an extra level of security via keypad access. Both levels feature security cameras and elevators to whisk you quickly to ground level.

Designed for Living



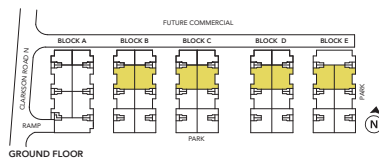
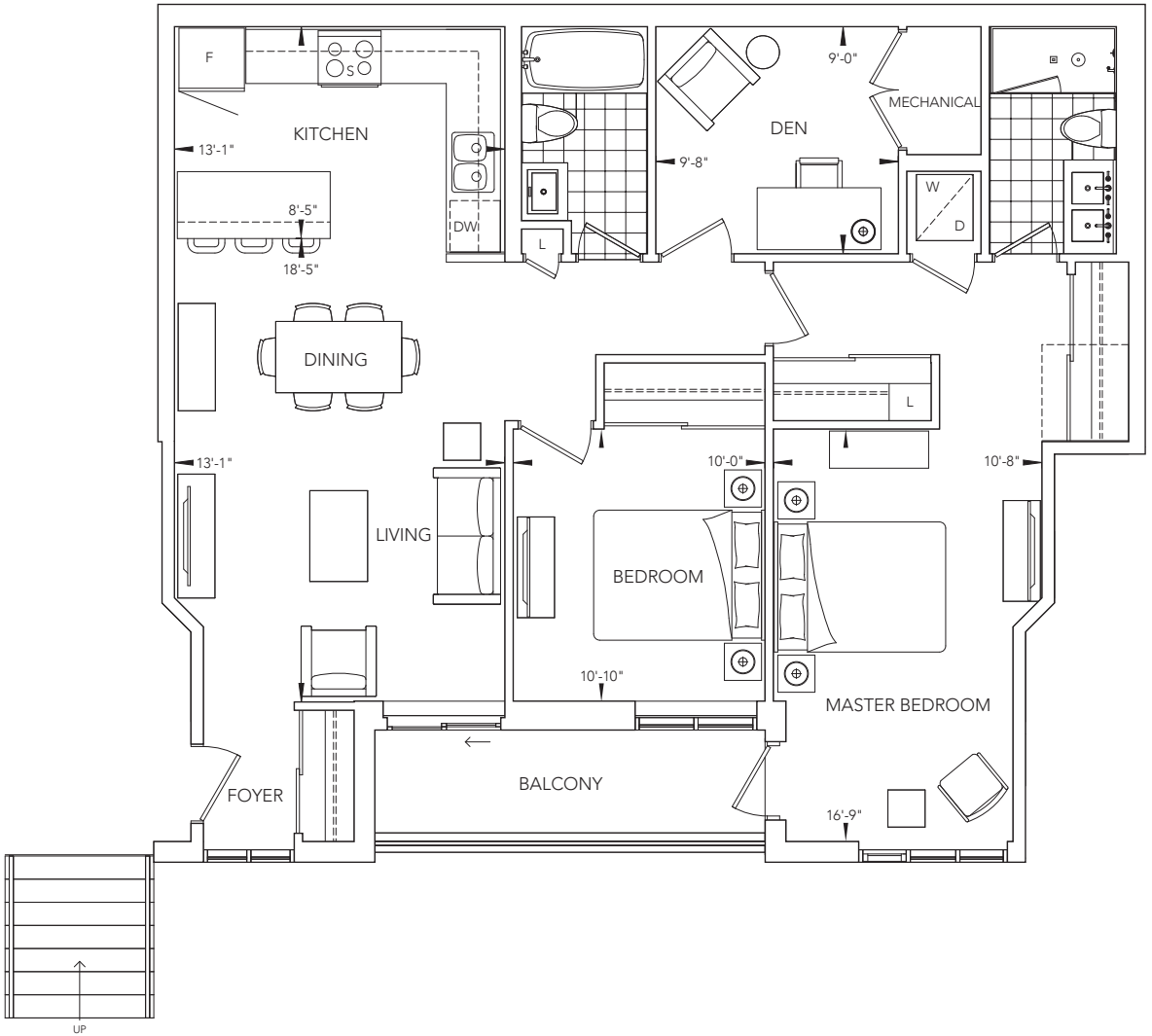
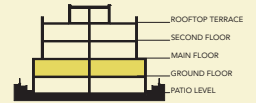
GROUND SUITE

The Auld 1,149 sq.ft.
 58 sq.ft. Balcony



The Auld

1,149 sq.ft.
58 sq.ft. Balcony





- 1** Private Rooftop Terraces
 Entertain guests or enjoy some quiet downtime outdoors on your private Rooftop Terrace. This additional living and entertaining space comes standard with every two-story townhome.
- 2** Smartly Designed Interiors
 Innovative designs maximize all interior spaces while delivering a modern, clean aesthetic. Open concept layouts create a sense of even greater space, by allowing one room to transition seamlessly into the next. Exceptional and uncompromising craftsmanship is evident at every turn – from every finish selected to every design detail.
- 3** Chef Inspired Kitchens
 Open concept kitchens feature designer-selected, extended kitchen cabinetry with islands and your choice of granite or quartz countertop. Other modern accents include ceramic tile backsplash, under mount sink with single lever faucet and sleek stainless steel appliances.
- 4** Beautiful Bathrooms
 Bathrooms feature designer cabinetry, cultured marble countertop, walk-in framed glass shower, and contemporary ceramic and porcelain tiles.
- 5** Secure Underground Parking
 Visitors have access to well-lit and secure underground parking; residents enjoy an extra level of security via keypad access. Both levels feature security cameras and elevators to whisk you quickly to ground level.

Designed for *Living*

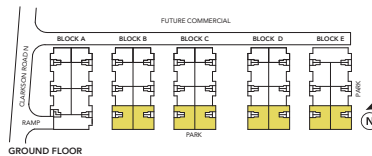
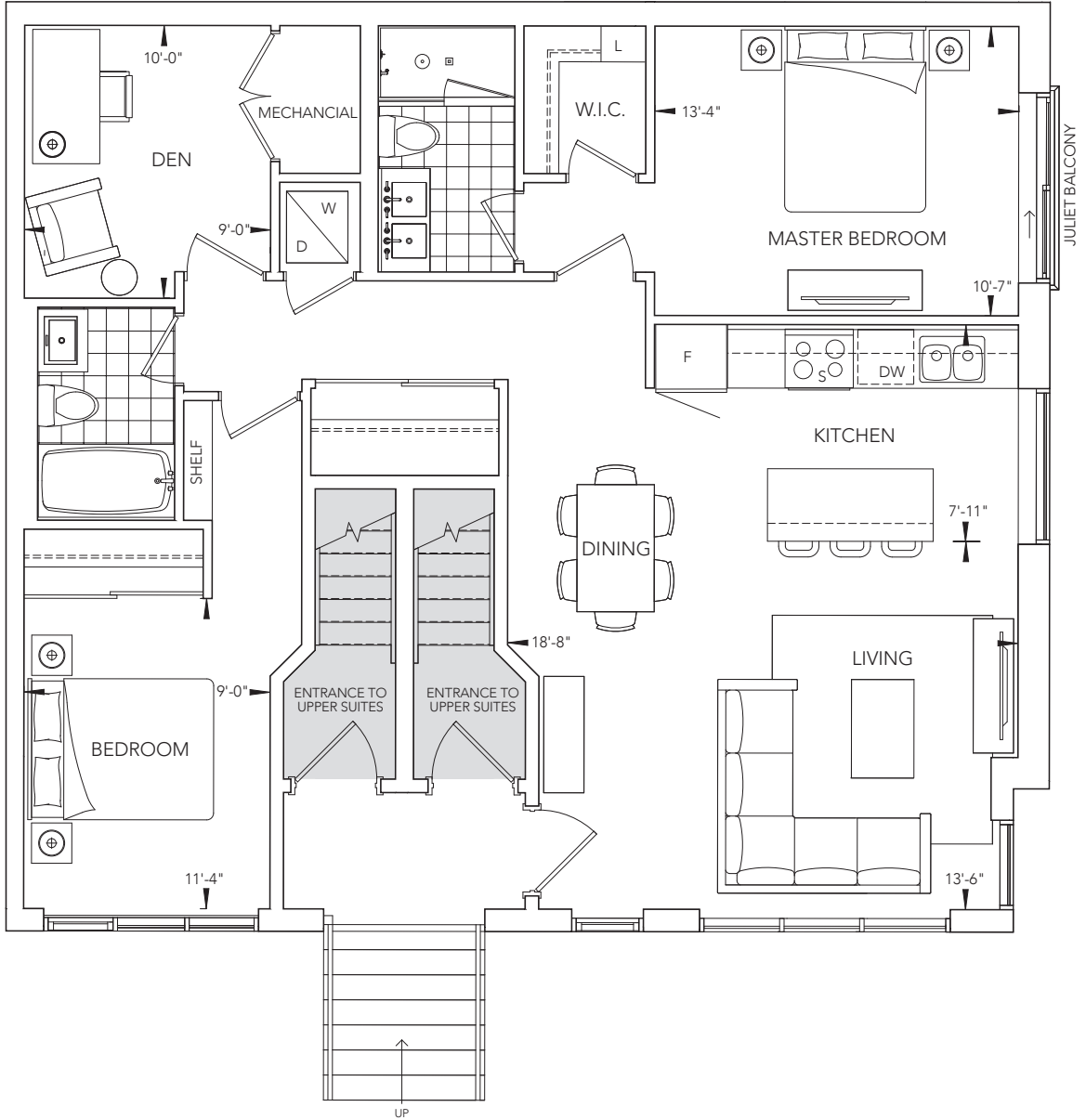
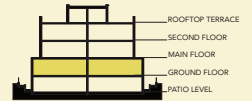


GROUND SUITE

The Durie 1,157 sq.ft.



The Durie 1,157 sq.ft.





- 1** Private Rooftop Terraces
 Entertain guests or enjoy some quiet downtime outdoors on your private Rooftop Terrace. This additional living and entertaining space comes standard with every two-story townhome.
- 2** Smartly Designed Interiors
 Innovative designs maximize all interior spaces while delivering a modern, clean aesthetic. Open concept layouts create a sense of even greater space, by allowing one room to transition seamlessly into the next. Exceptional and uncompromising craftsmanship is evident at every turn – from every finish selected to every design detail.
- 3** Chef Inspired Kitchens
 Open concept kitchens feature designer-selected, extended kitchen cabinetry with islands and your choice of granite or quartz countertop. Other modern accents include ceramic tile backsplash, under mount sink with single lever faucet and sleek stainless steel appliances.
- 4** Beautiful Bathrooms
 Bathrooms feature designer cabinetry, cultured marble countertop, walk-in framed glass shower, and contemporary ceramic and porcelain tiles.
- 5** Secure Underground Parking
 Visitors have access to well-lit and secure underground parking; residents enjoy an extra level of security via keypad access. Both levels feature security cameras and elevators to whisk you quickly to ground level.

Designed for *Living*



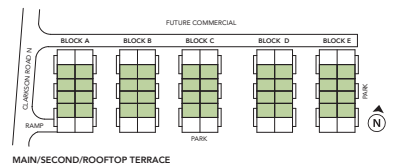
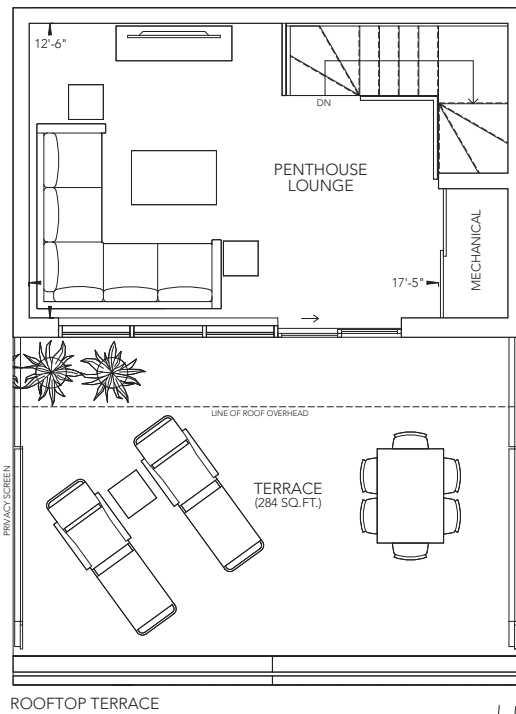
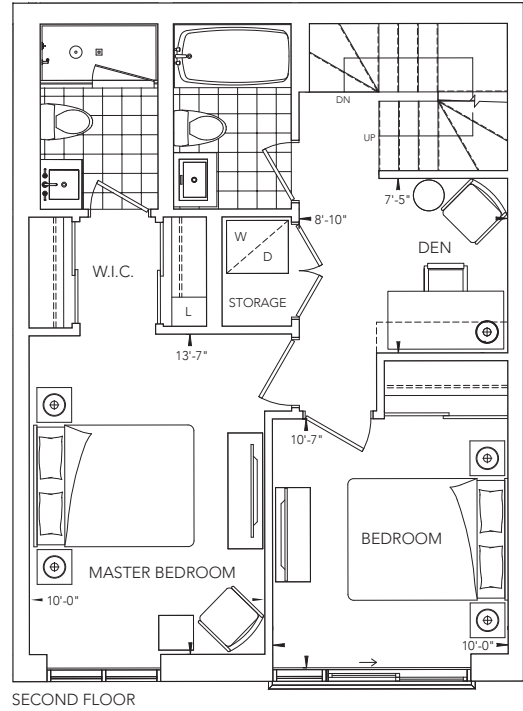
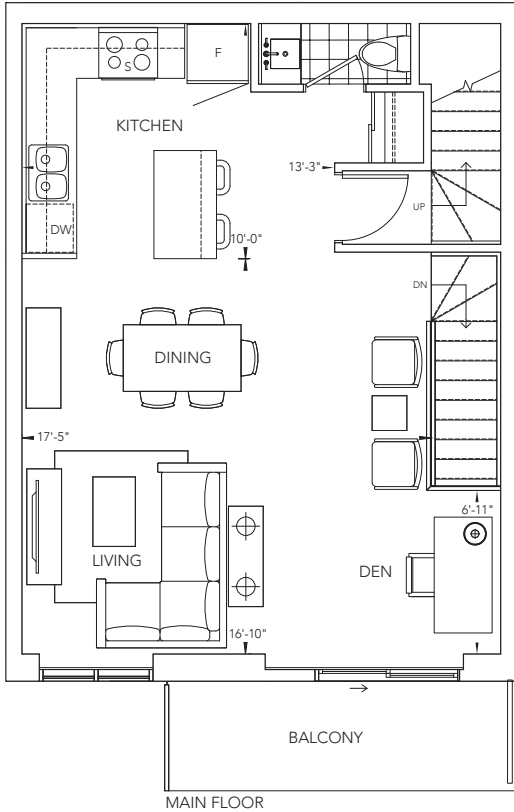
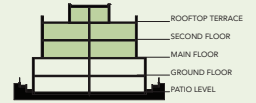
TERRACE SUITE

The Charlotte 1,541 sq.ft.
 70 sq.ft. Balcony
 284 sq.ft. Terrace



The Charlotte

1,541 sq.ft.
70 sq.ft. Balcony
284 sq.ft. Terrace





- 1** Private Rooftop Terraces
 Entertain guests or enjoy some quiet downtime outdoors on your private Rooftop Terrace. This additional living and entertaining space comes standard with every two-storey townhome.
- 2** Smartly Designed Interiors
 Innovative designs maximize all interior spaces while delivering a modern, clean aesthetic. Open concept layouts create a sense of even greater space, by allowing one room to transition seamlessly into the next. Exceptional and uncompromising craftsmanship is evident at every turn – from every finish selected to every design detail.
- 3** Chef Inspired Kitchens
 Open concept kitchens feature designer-selected, extended kitchen cabinetry with islands and your choice of granite or quartz countertop. Other modern accents include ceramic tile backsplash, under mount sink with single lever faucet and sleek stainless steel appliances.
- 4** Beautiful Bathrooms
 Bathrooms feature designer cabinetry, cultured marble countertop, walk-in framed glass shower, and contemporary ceramic and porcelain tiles.
- 5** Secure Underground Parking
 Visitors have access to well-lit and secure underground parking; residents enjoy an extra level of security via keypad access. Both levels feature security cameras and elevators to whisk you quickly to ground level.

Designed for *Living*



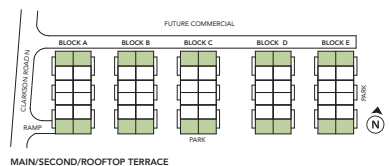
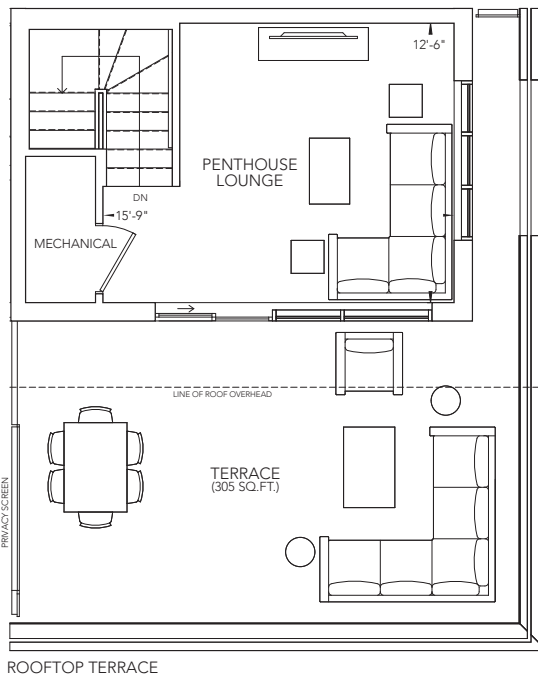
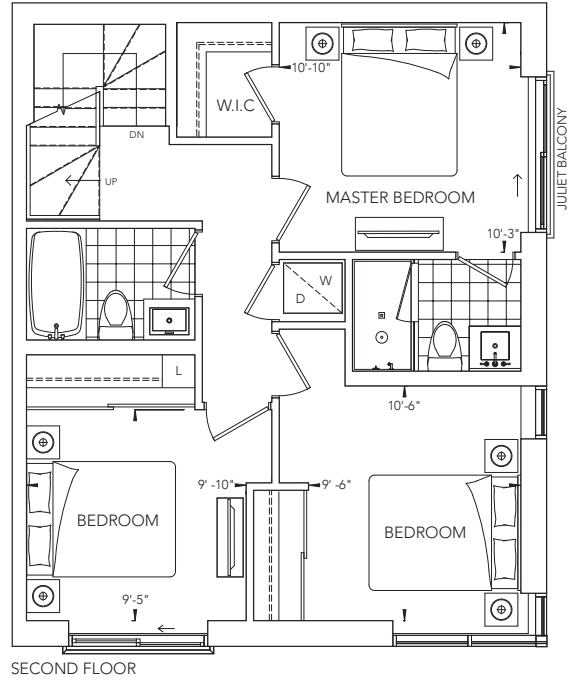
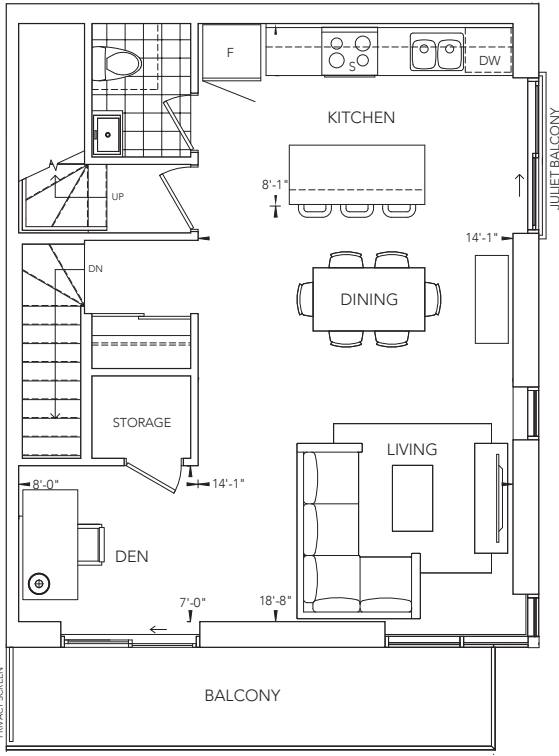
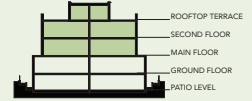
TERRACE SUITE

The George 1,687 sq.ft.
 93 sq.ft. Balcony
 305 sq.ft. Terrace



The George

1,687 sq.ft.
93 sq.ft. Balcony
305 sq.ft. Terrace



All dimensions are approximate and subject to normal construction variances. Dimensions may exceed the usable floor area. Sizes and specifications subject to change without notice. Terrace/Balcony/Patio sizes may vary. Please ask sales representative for more details. Furniture is displayed for illustration purposes only and does not necessarily reflect the electrical plan for the suite. Suites are sold unfurnished. E. & O.E.