













**BACHELOR SUITES**

SB – 520 square feet  
 SF – 565 square feet

PAGE

5  
 6

**ONE BEDROOM SUITES**

1B – 662 square feet  
 1G – 702 square feet  
 1I – 726 square feet  
 1M – 928 square feet  
 1P – 940 square feet  
 1Q – 786 square feet

7  
 8  
 9  
 10  
 11  
 12

**ONE BEDROOM + MEDIA**

1J+M – 730 square feet  
 1K+M – 731 square feet  
 1L+M – 731 square feet

PAGE

13  
 14  
 15

**TWO BEDROOM**

2G – 989 square feet  
 2E - 1,182 square feet  
 2H – 1,195 square feet  
 2I – 1,198 square feet  
 2J – 1,246 square feet

16  
 17  
 18  
 19  
 20



# TABLE OF CONTENTS

## **TWO BEDROOM + DEN** PAGE

2L+D – 1,059 square feet 21

2N+D – 1,392 square feet 22

## **3 BEDROOM**

3A – 1,457 square feet 23

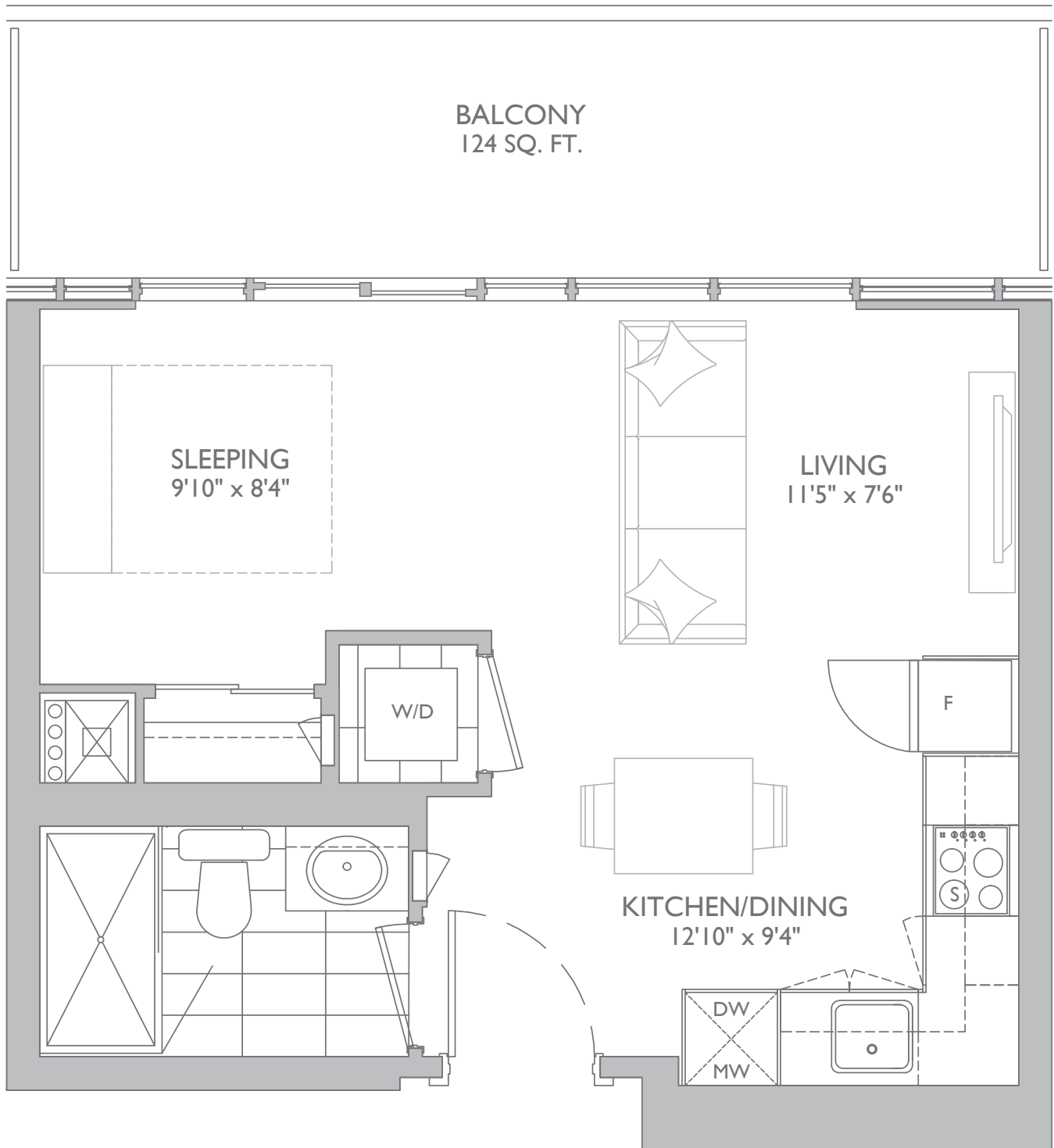
3B – 1,531 square feet 24



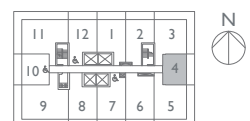
# BACHELOR

INTERIOR: 396 SQ.FT. | BALCONY: 124 SQ.FT. | TOTAL: 520 SQ.FT.

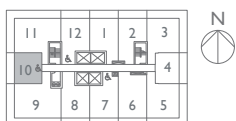
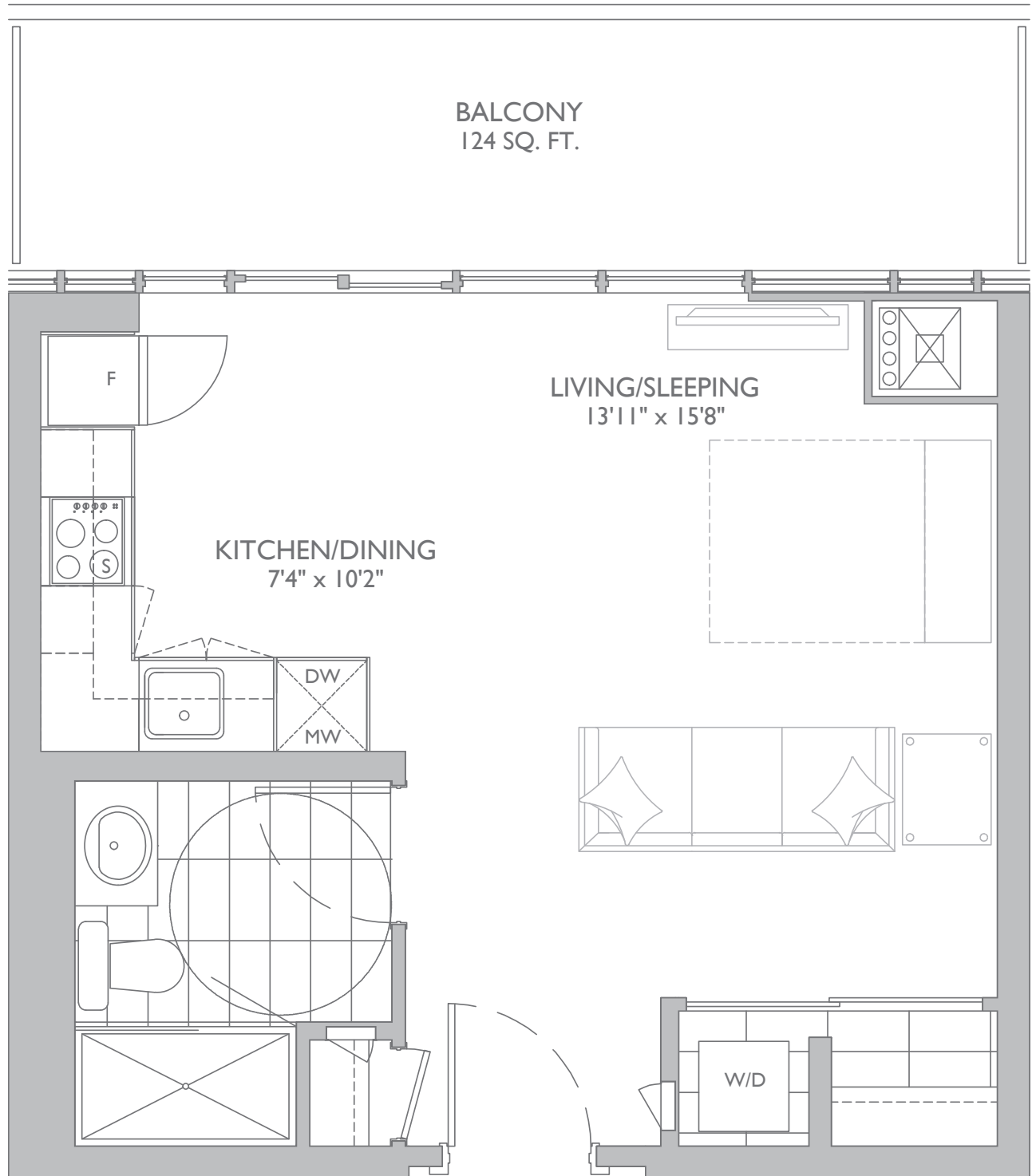
MODEL: SB



Prices, figures, illustrations, sizes, features and finishes are subject to change without notice. Areas and dimensions are approximate and actual usable floorspace may vary from the stated area. E. & O. E. July 2019



L6-L15

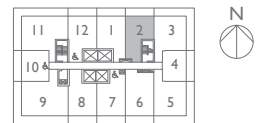
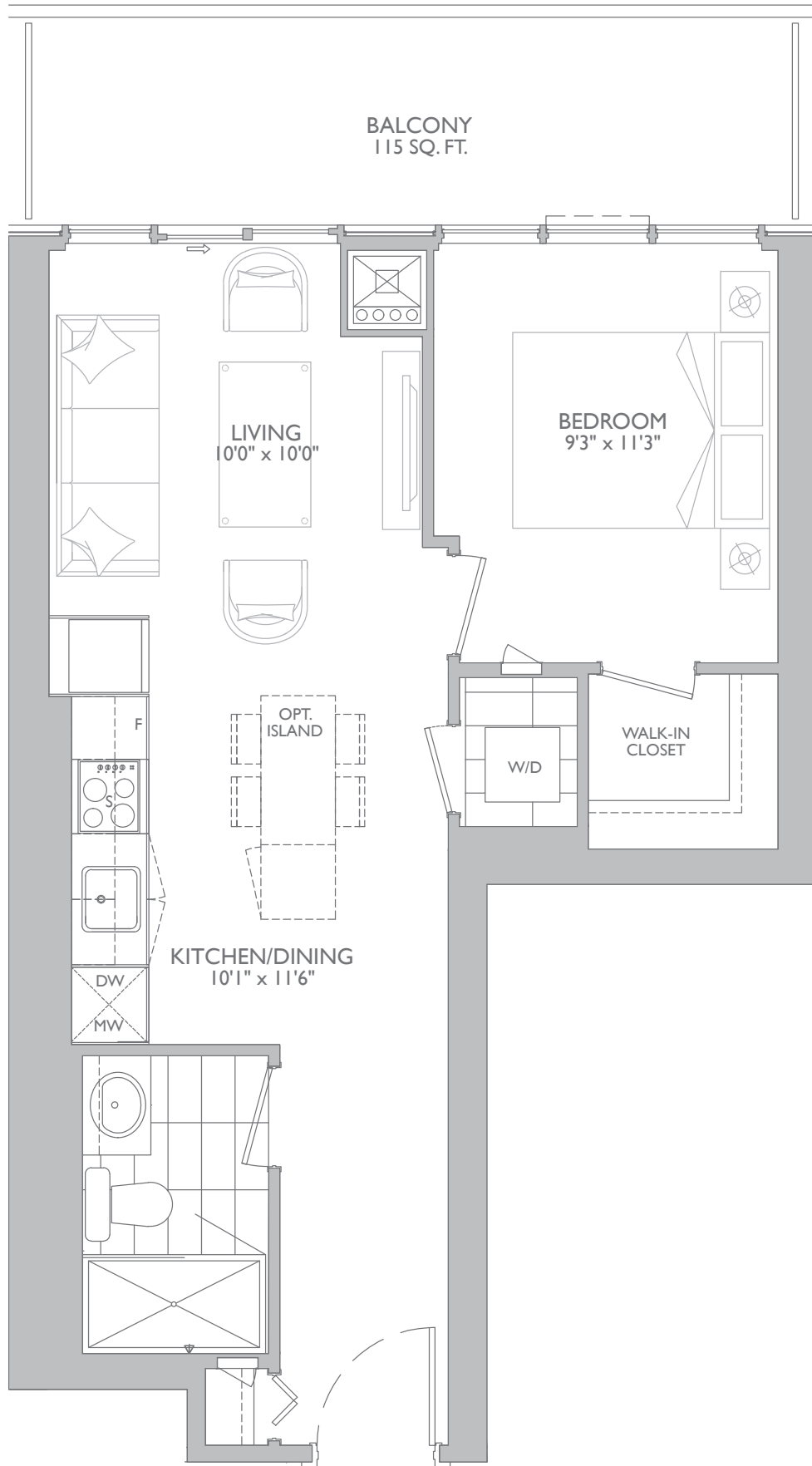


Prices, figures, illustrations, sizes, features and finishes are subject to change without notice. Areas and dimensions are approximate and actual usable floorspace may vary from the stated area. E. & O. E. July 2019

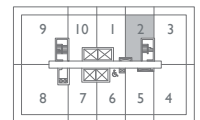
# 1 BEDROOM

INTERIOR: 547 SQ.FT. | BALCONY: 115 SQ.FT. | TOTAL: 662 SQ.FT.

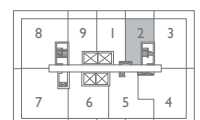
MODEL: 1B



L6-L15

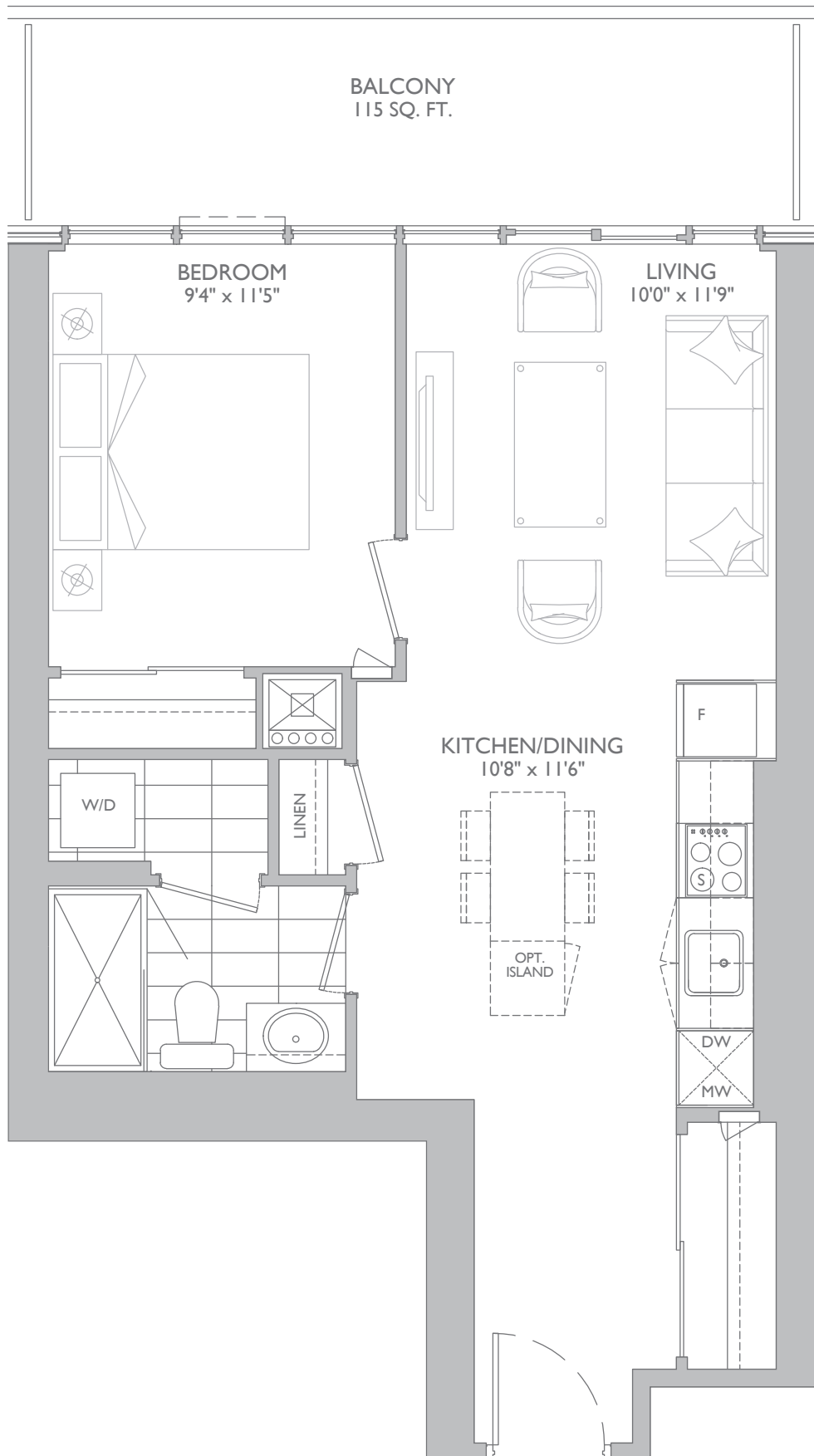


L16-L30

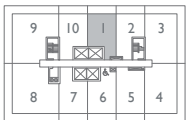


L31-L35

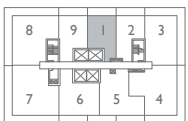




L6-L15



L16-L30



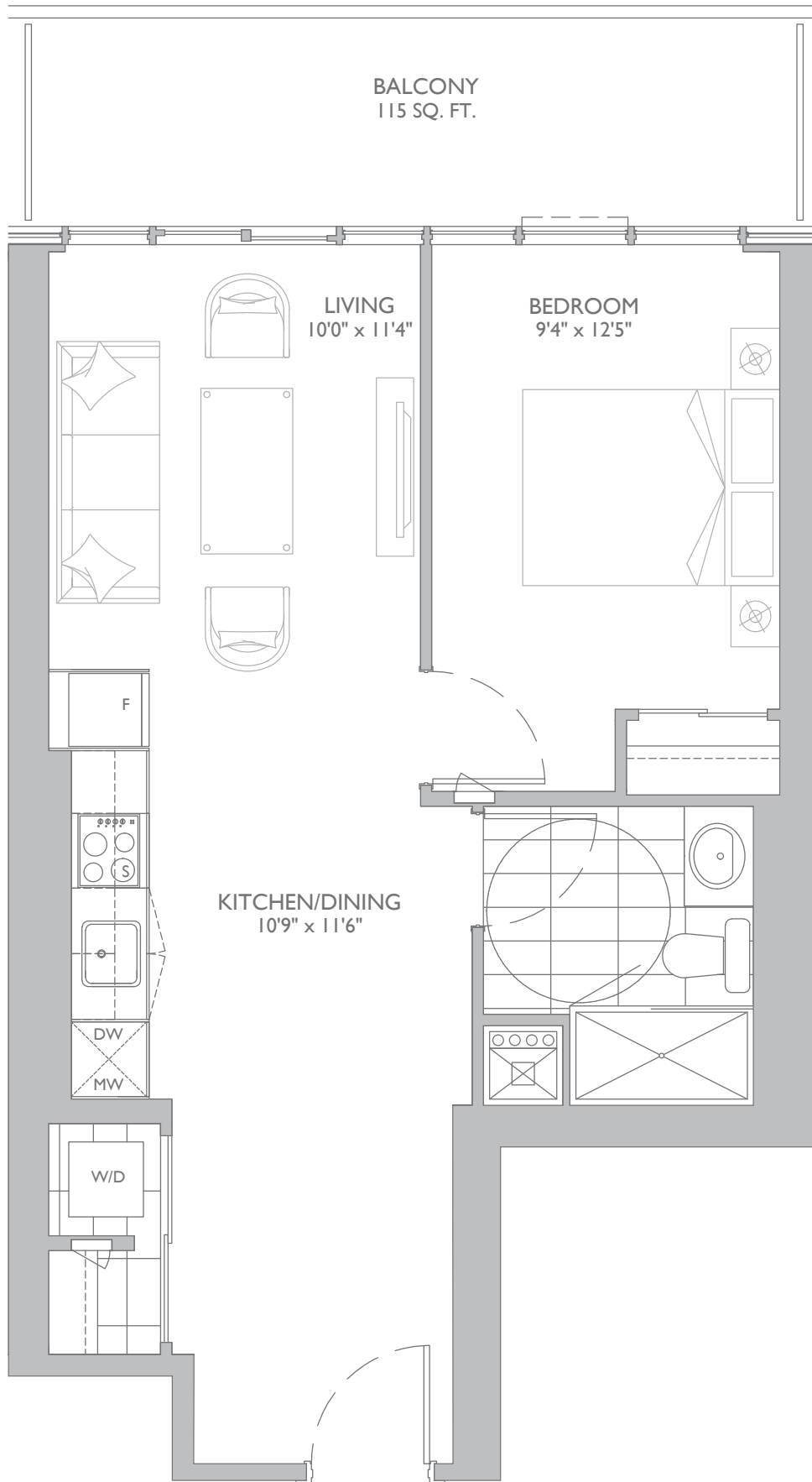
L31-L35

Prices, figures, illustrations, sizes, features and finishes are subject to change without notice. Areas and dimensions are approximate and actual usable floorspace may vary from the stated area. E. & O. E. July 2019

# 1 BEDROOM

INTERIOR: 611 SQ.FT. | BALCONY: 115 SQ.FT. | TOTAL: 726 SQ.FT.

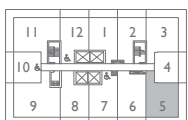
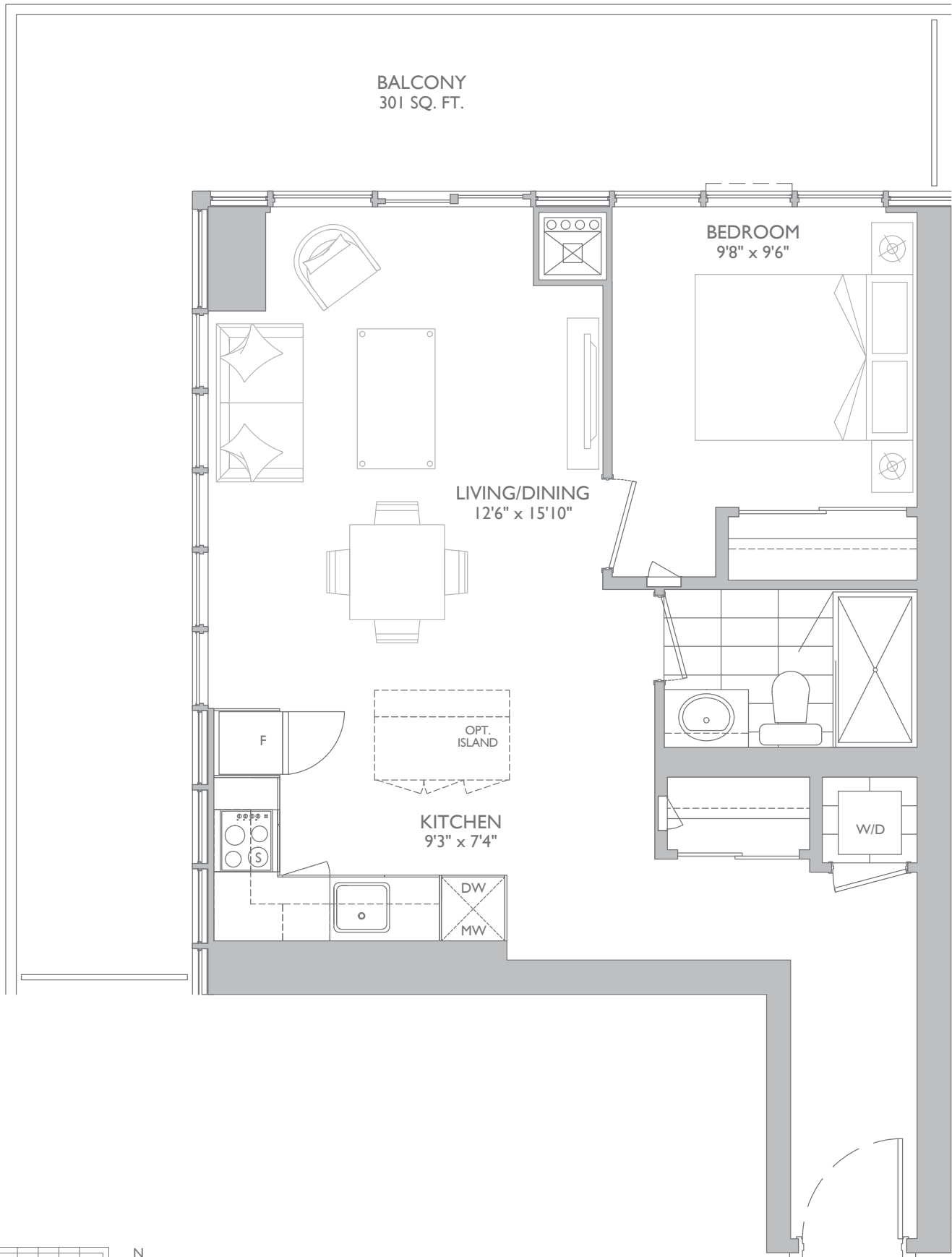
MODEL: 11



L6-L15



L16-L30

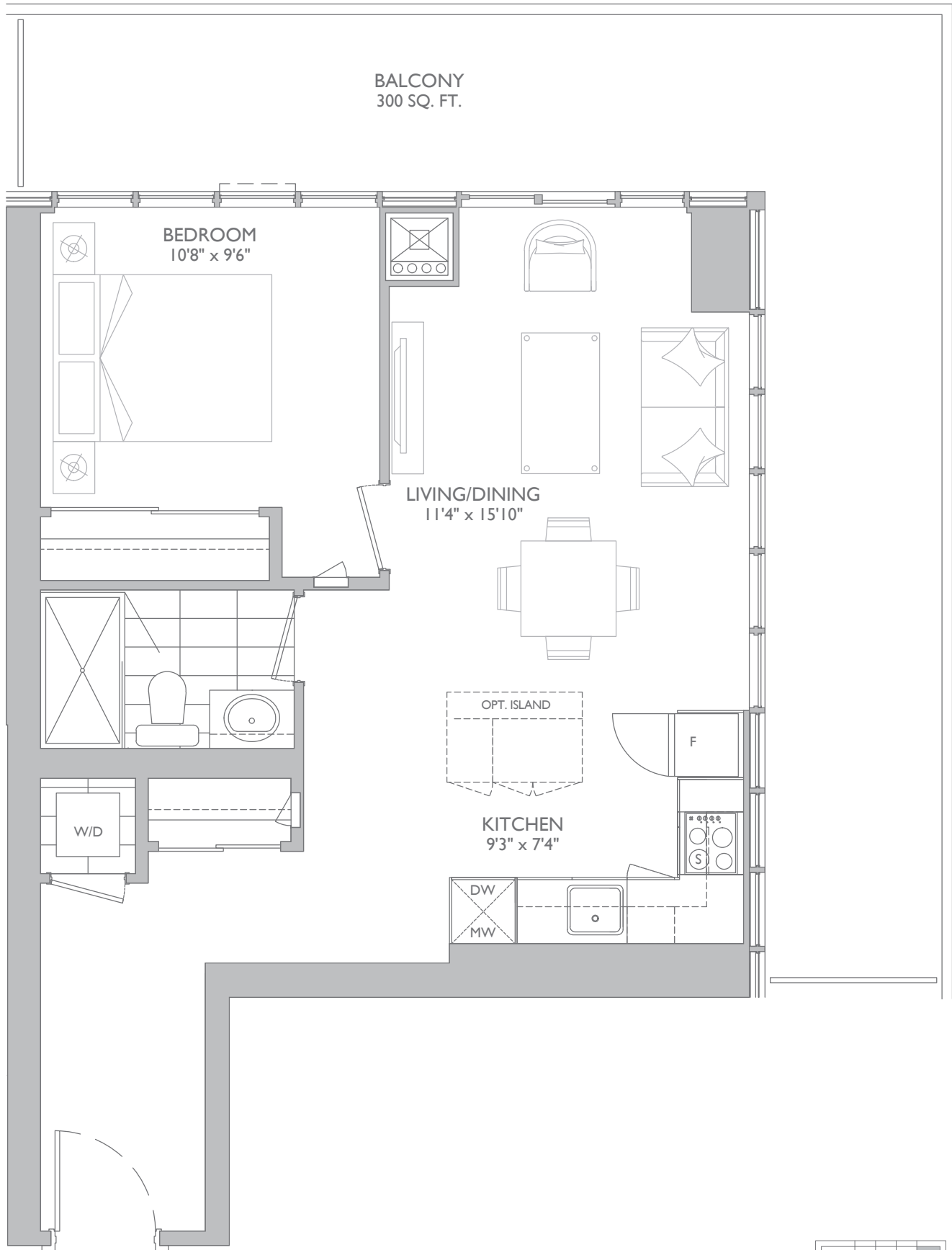




# 1 BEDROOM

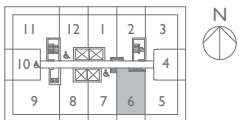
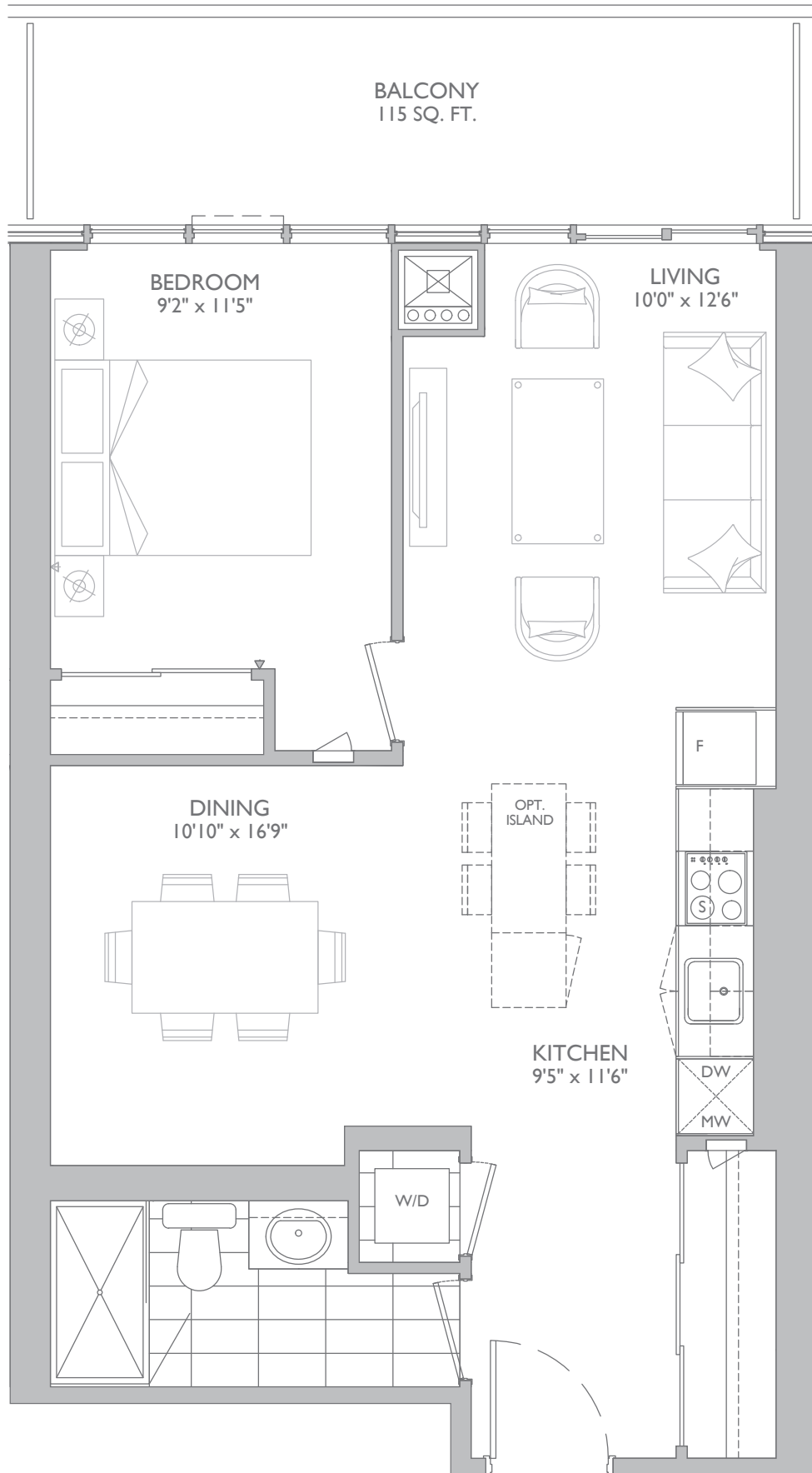
INTERIOR: 640 SQ.FT. | BALCONY: 300 SQ.FT. | TOTAL: 940 SQ.FT.

MODEL: 1P

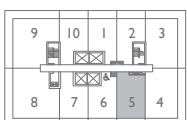


Prices, figures, illustrations, sizes, features and finishes are subject to change without notice. Areas and dimensions are approximate and actual usable floorspace may vary from the stated area. E. & O. E. July 2019

L6-L15



L6-L15



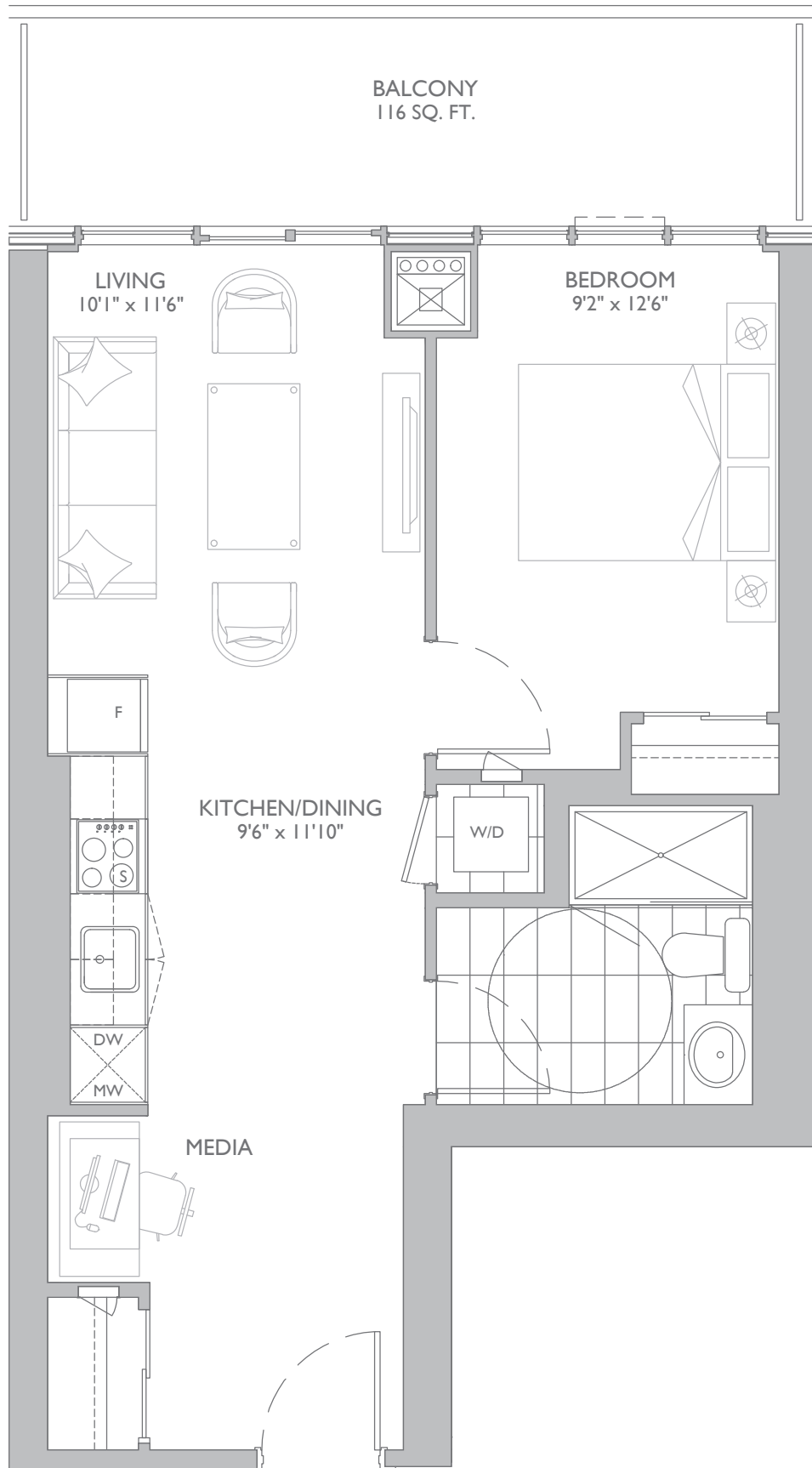
L16-L30

Prices, figures, illustrations, sizes, features and finishes are subject to change without notice. Areas and dimensions are approximate and actual usable floorspace may vary from the stated area. E. & O. E. July 2019

# 1 BEDROOM + MEDIA

INTERIOR: 614 SQ.FT. | BALCONY: 116 SQ.FT. | TOTAL: 730 SQ.FT.

MODEL: 1J+M



Prices, figures, illustrations, sizes, features and finishes are subject to change without notice. Areas and dimensions are approximate and actual usable floorspace may vary from the stated area. E. & O. E. July 2019



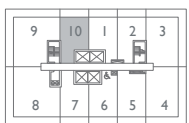
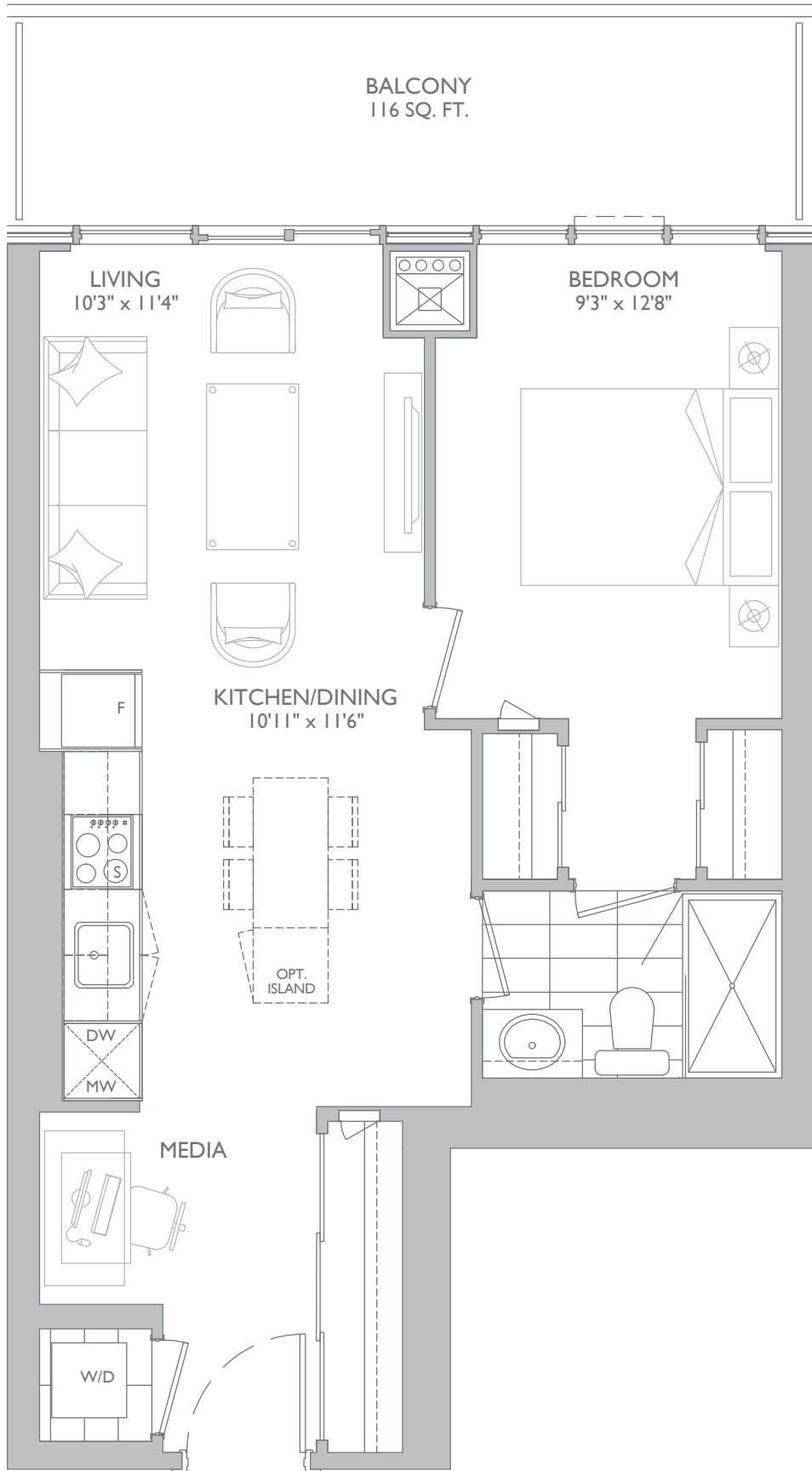
L6-L15



INTERIOR: 615 SQ.FT. | BALCONY: 116 SQ.FT. | TOTAL: 731 SQ.FT.

# 1 BEDROOM + MEDIA

MODEL: 1K+M



L16-L30



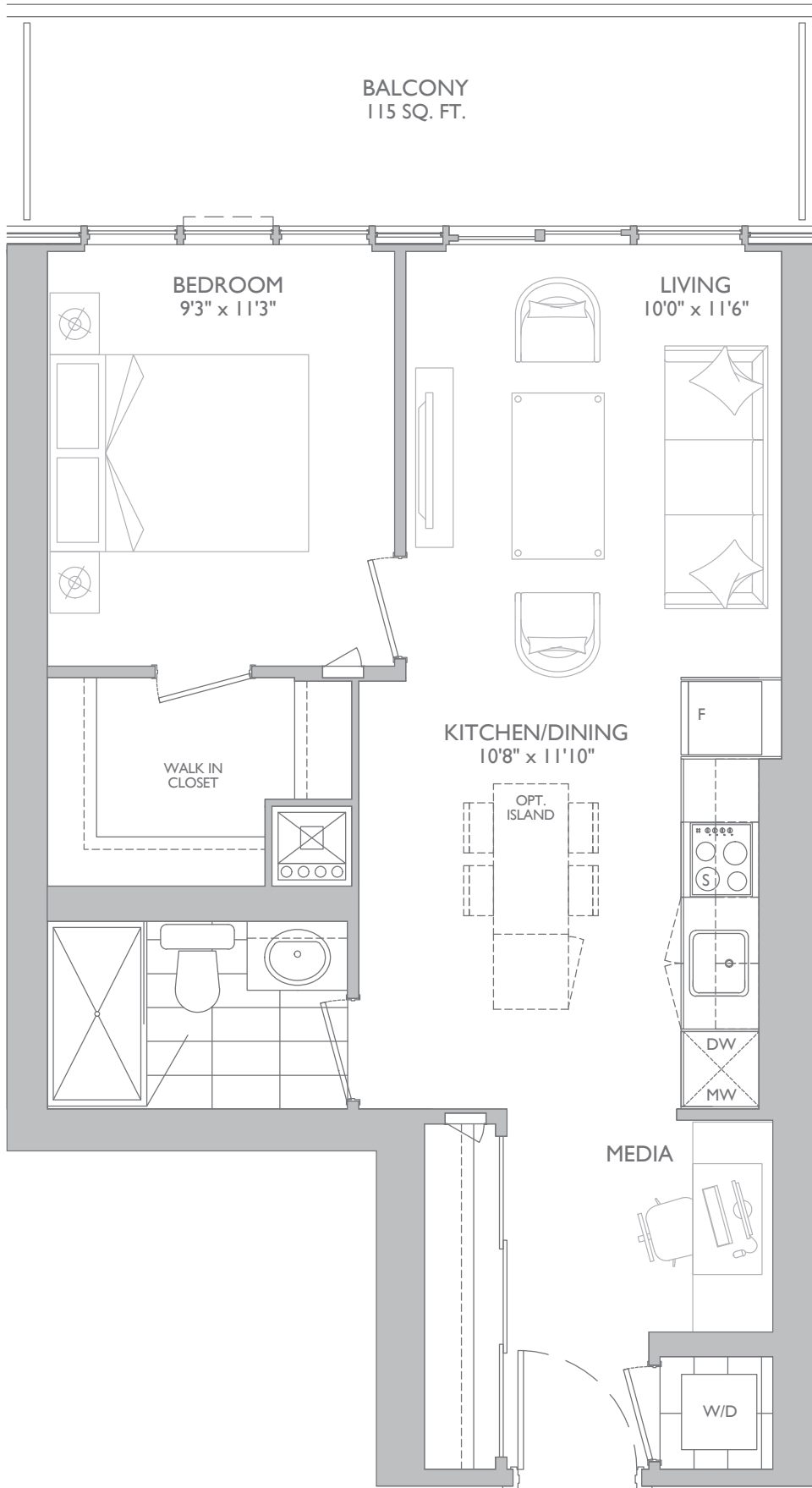
L31-L35

Prices, figures, illustrations, sizes, features and finishes are subject to change without notice. Areas and dimensions are approximate and actual usable floorspace may vary from the stated area. E. & O. E. July 2019

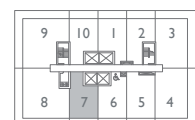
# 1 BEDROOM + MEDIA

INTERIOR: 616 SQ.FT. | BALCONY: 115 SQ.FT. | TOTAL: 731 SQ.FT.

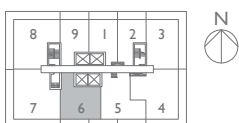
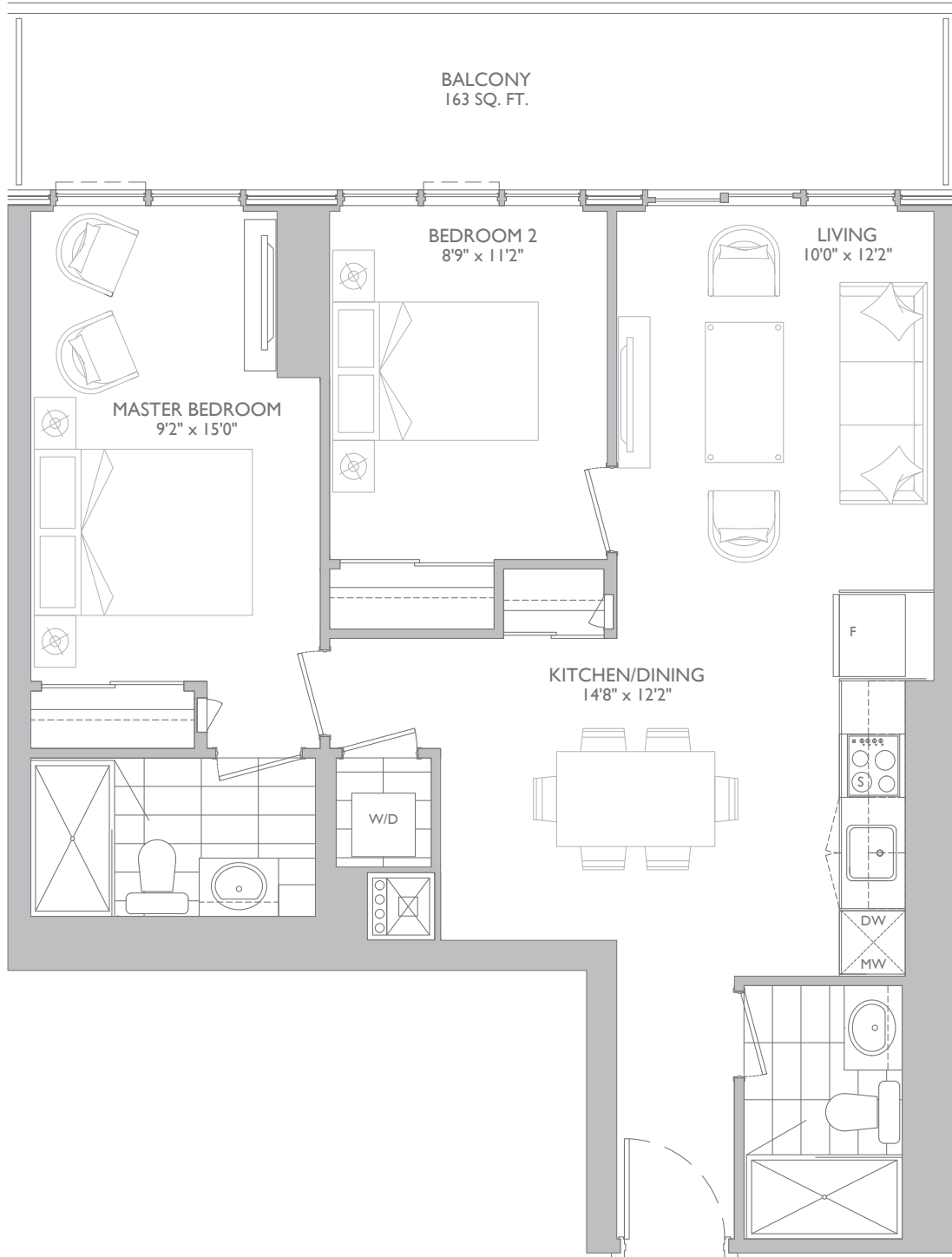
MODEL: 1L+M



L6-L15



L16-L30



L31-L35

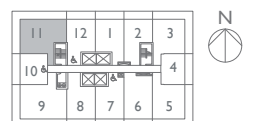
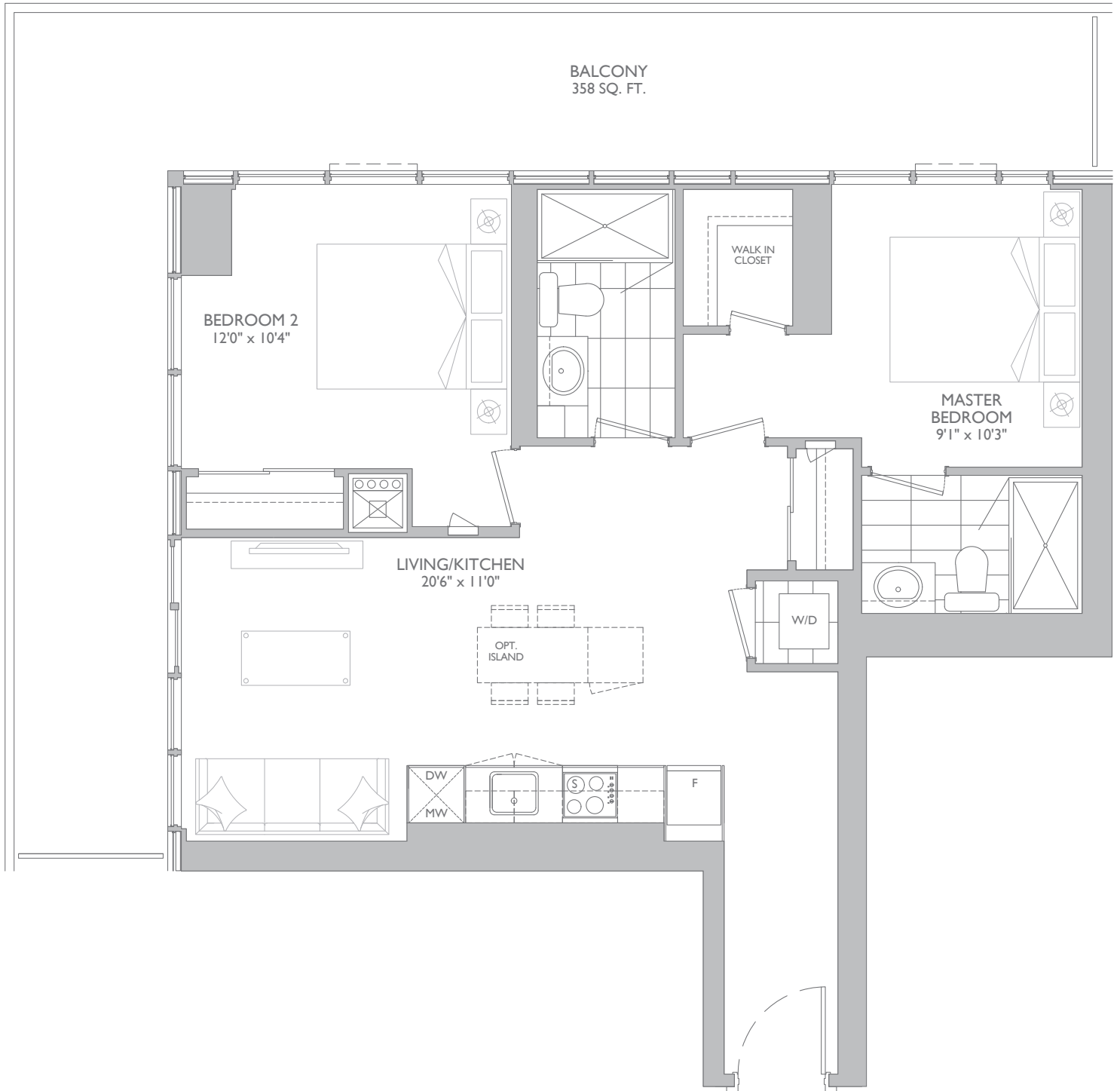
Prices, figures, illustrations, sizes, features and finishes are subject to change without notice. Areas and dimensions are approximate and actual usable floorspace may vary from the stated area. E. & O. E. July 2019



# 2 BEDROOM

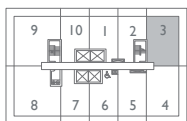
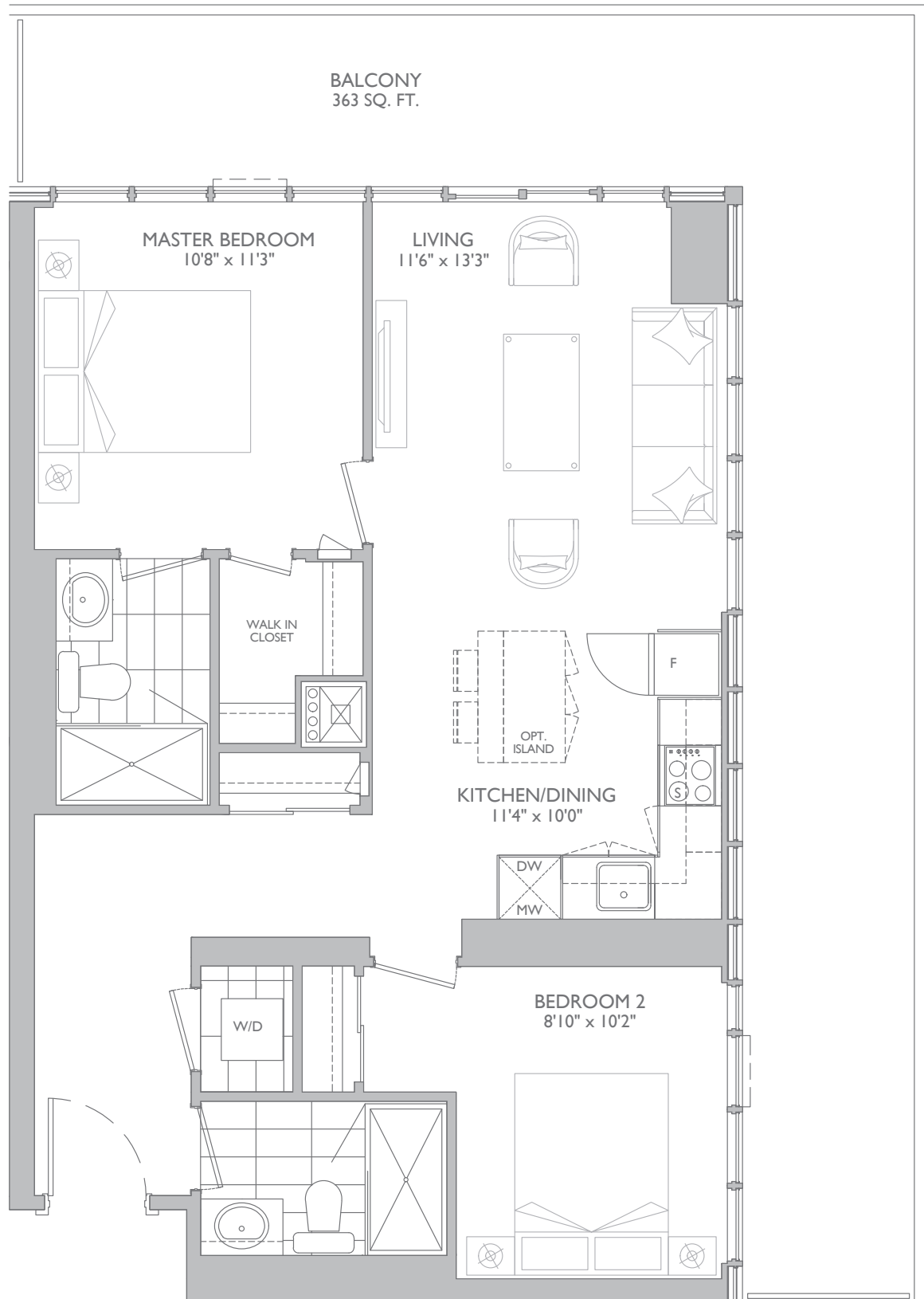
INTERIOR: 824 SQ.FT. | BALCONY: 358 SQ.FT. | TOTAL: 1,182 SQ.FT.

MODEL: 2E

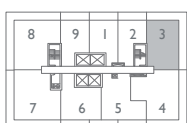


Prices, figures, illustrations, sizes, features and finishes are subject to change without notice. Areas and dimensions are approximate and actual usable floorspace may vary from the stated area. E. & O. E. July 2019

L6-L15



L16-L30



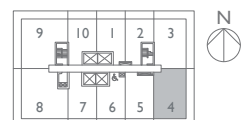
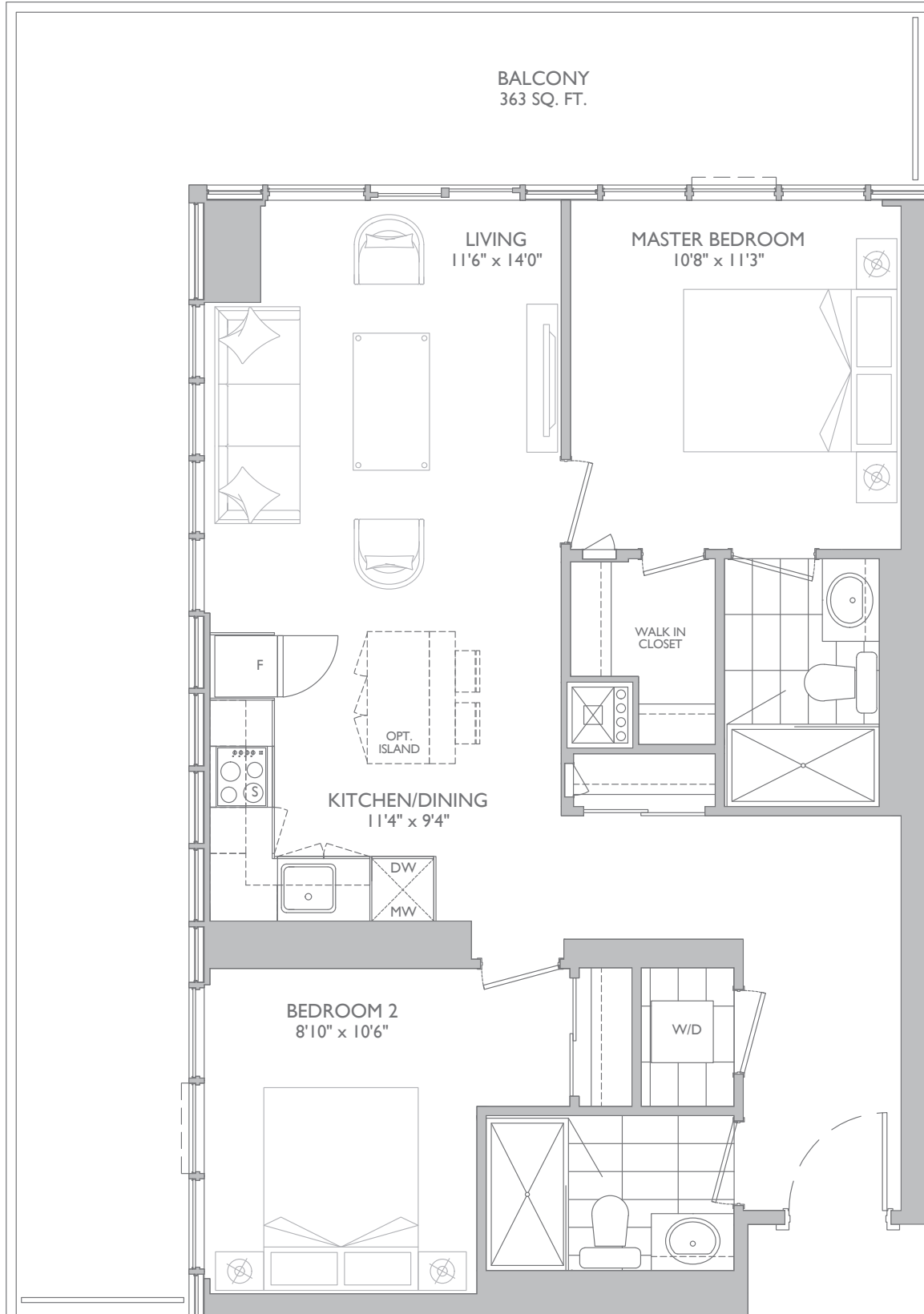
L31-L35

Prices, figures, illustrations, sizes, features and finishes are subject to change without notice. Areas and dimensions are approximate and actual usable floorspace may vary from the stated area. E. & O. E. July 2019

# 2 BEDROOM

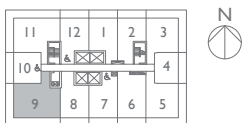
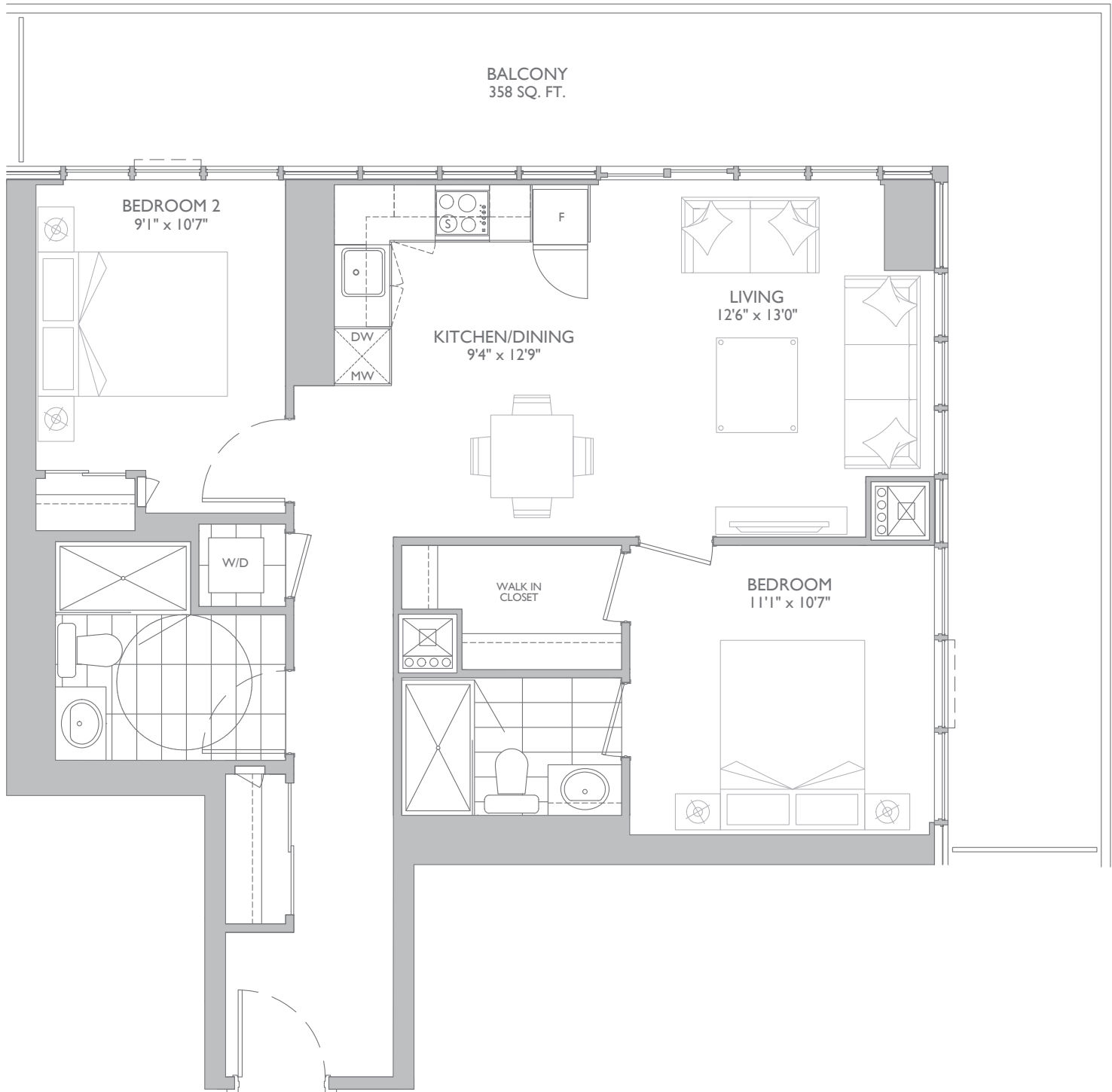
INTERIOR: 835 SQ.FT. | BALCONY: 363 SQ.FT. | TOTAL: 1,198 SQ.FT.

MODEL: 21



Prices, figures, illustrations, sizes, features and finishes are subject to change without notice. Areas and dimensions are approximate and actual usable floorspace may vary from the stated area. E. & O. E. July 2019

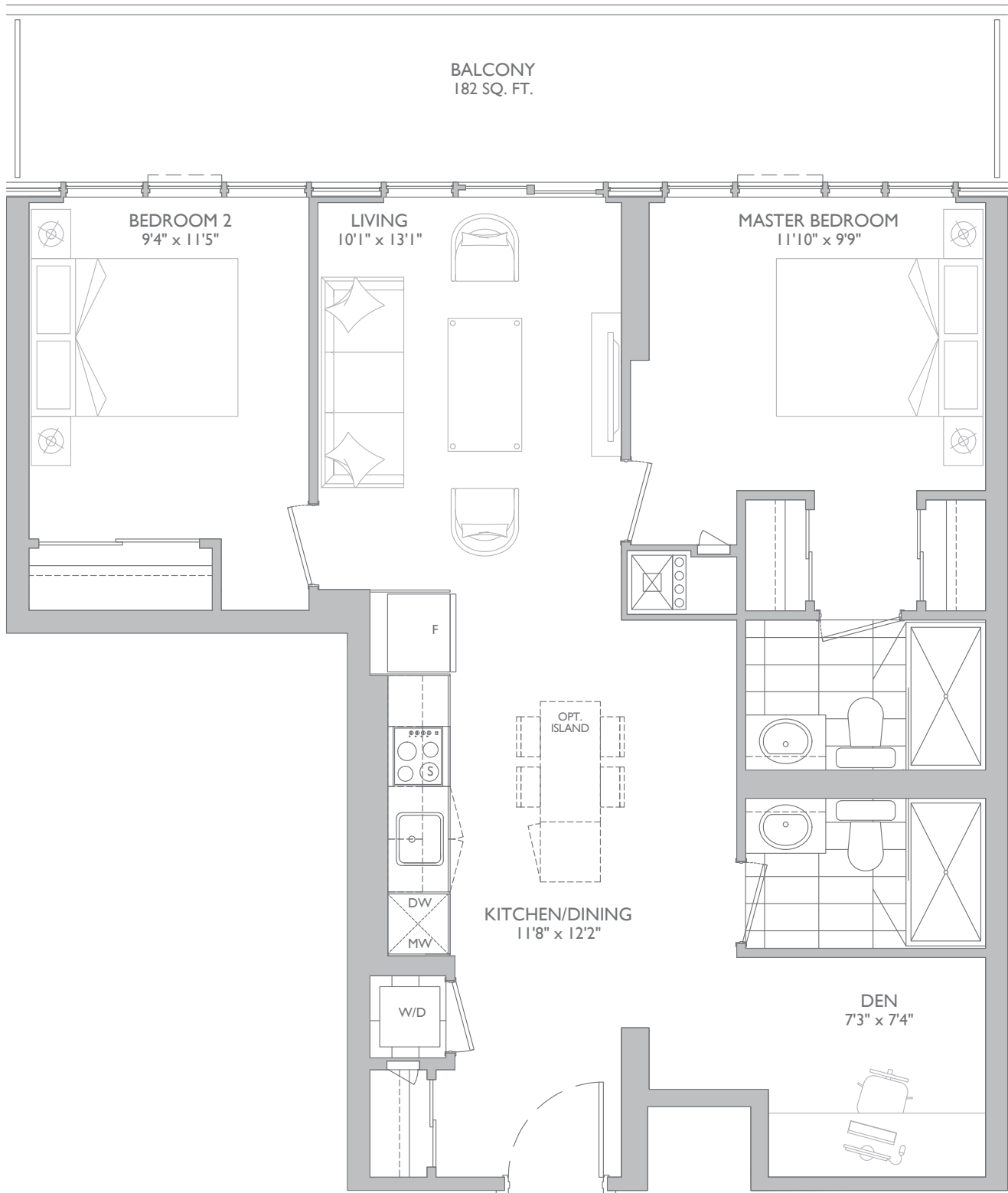
L16-L30



# 2 BEDROOM + DEN

INTERIOR: 877 SQ.FT. | BALCONY: 182 SQ.FT. | TOTAL: 1,059 SQ.FT.

MODEL: 2L+D

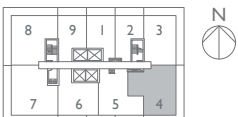
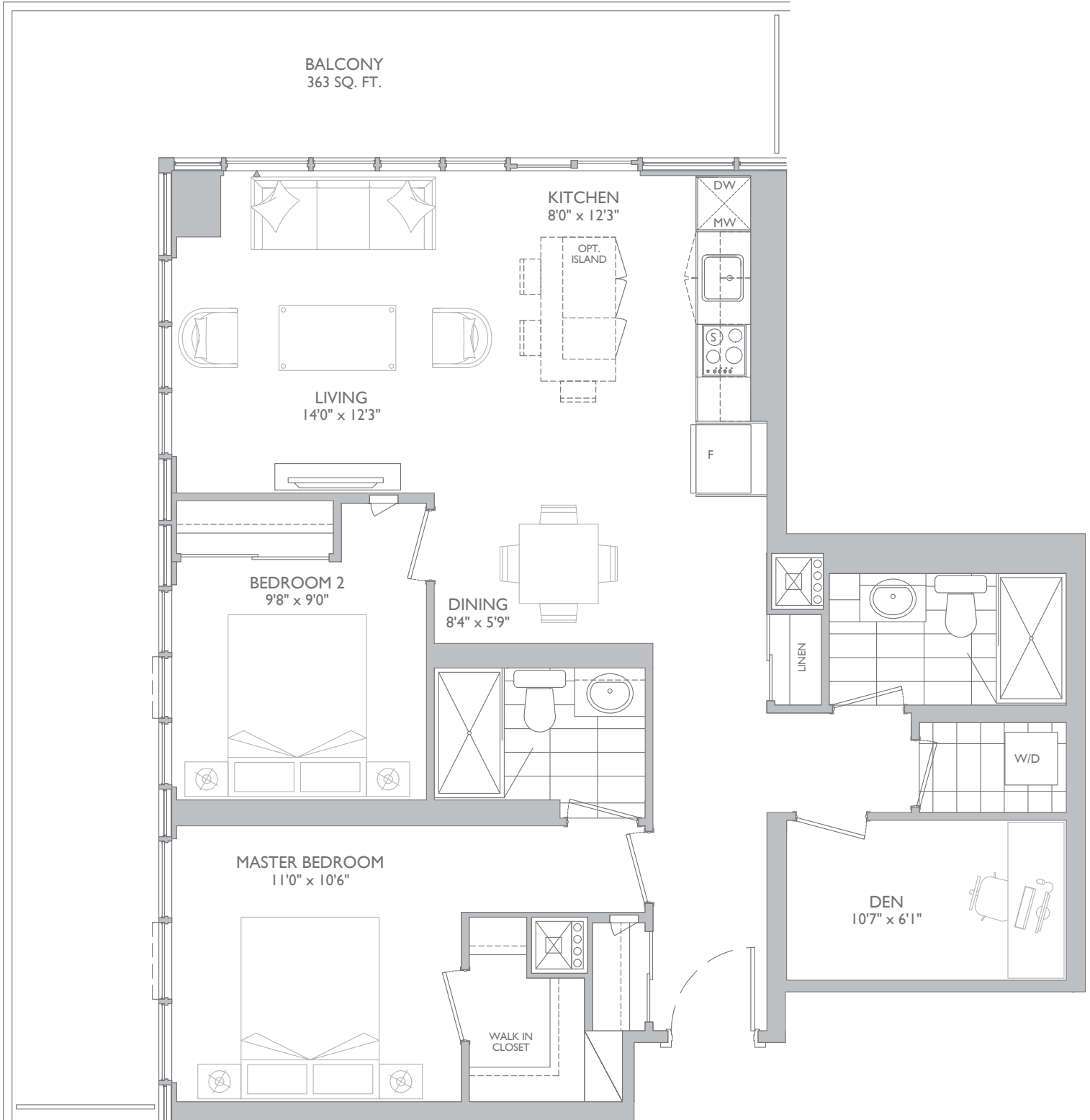


Prices, figures, illustrations, sizes, features and finishes are subject to change without notice. Areas and dimensions are approximate and actual usable floorspace may vary from the stated area. E. & O. E. July 2019

L31-L35

# 2 BEDROOM + DEN

MODEL: 2N+D



L31-L35

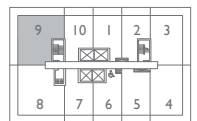
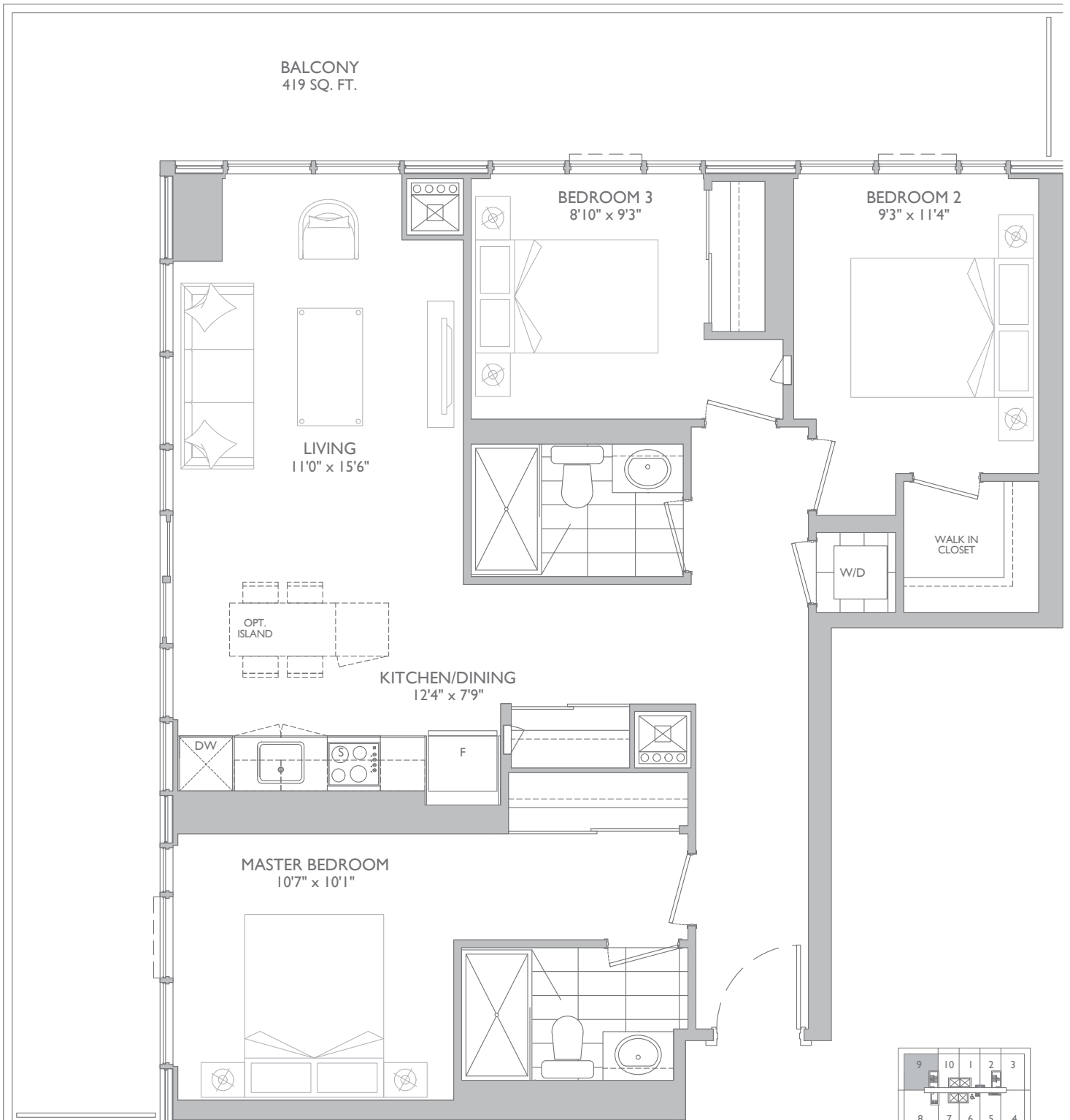
Prices, figures, illustrations, sizes, features and finishes are subject to change without notice. Areas and dimensions are approximate and actual usable floorspace may vary from the stated area. E. & O. E. July 2019



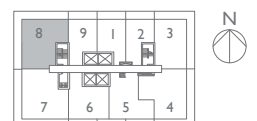
# 3 BEDROOM

INTERIOR: 1,038 SQ.FT. | BALCONY: 419 SQ.FT. | TOTAL: 1457 SQ.FT.

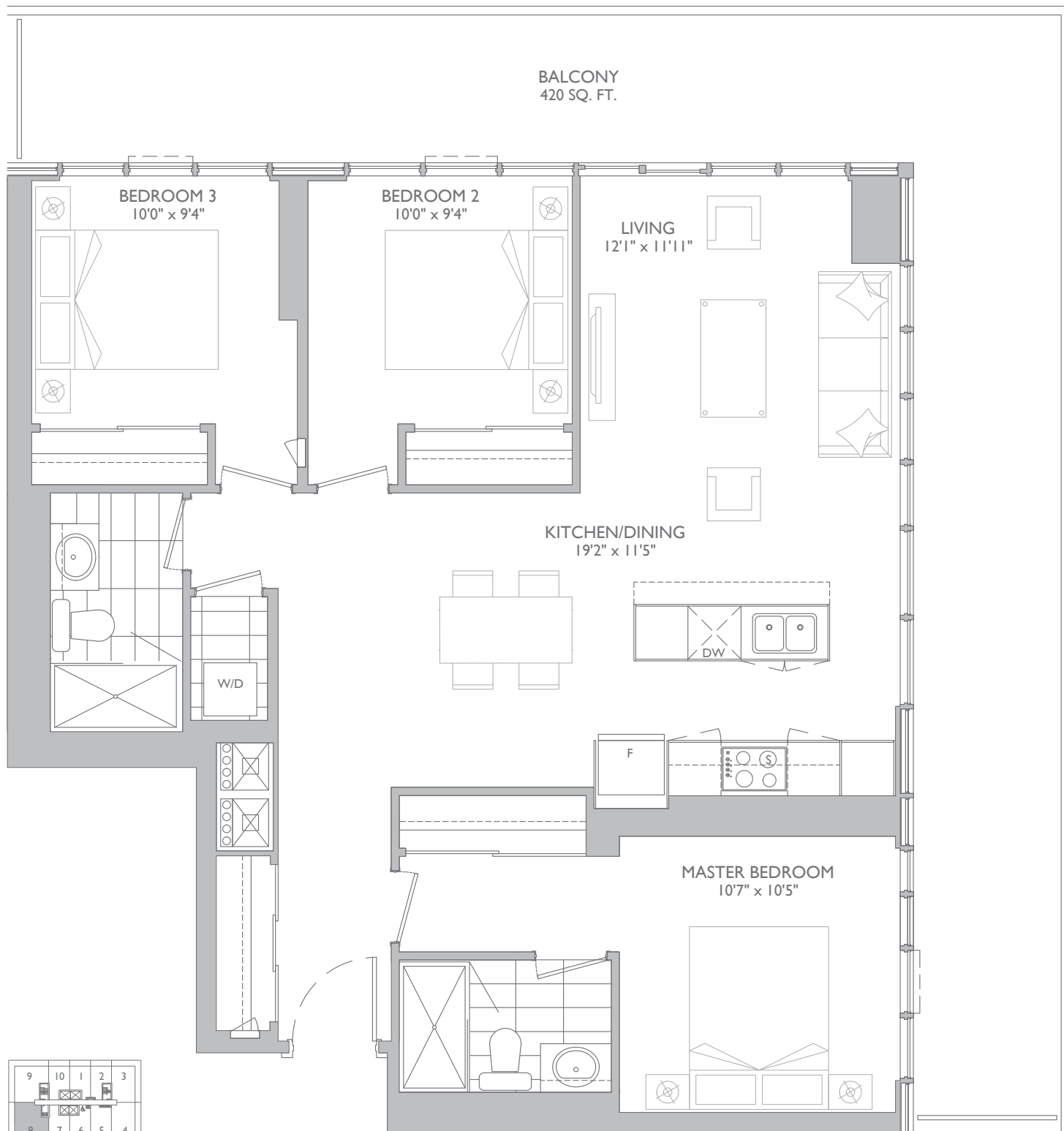
MODEL: 3A



L16-L30



L31-L35



L16-L30



L31-L35

Prices, figures, illustrations, sizes, features and finishes are subject to change without notice. Areas and dimensions are approximate and actual usable floorspace may vary from the stated area. E. & O. E. July 2019

# EXTRAORDINARY FEATURES AND FINISHES

## Luxurious Suite Features

- Approximate ceiling heights: 9' on Floors 2-35 and 10' on Floors 36-39.
- Your choice of plank laminate flooring in foyer, kitchen, living room, dining room, and den from Vendor's samples.\*
- Your choice of 40 oz environmentally-friendly textured carpet for bedrooms from Vendor's samples.
- Thermally insulated energy efficient double-glazed architecturally designed windows.
- Distinctive insulated patio door or sliding door to balcony.\*
- Distinctive Engineered Stone windowsills.
- White smooth ceilings throughout.
- One designer paint colour for interior walls as per Palette selected. Bathrooms and all woodwork and trims are painted with white low Volatile Organic Compounds (VOCs) semi-gloss paint.
- Suite entry closet with contemporary mirrored sliding doors.\*
- Custom designed 7' high single solid-core suite entry door with wood surround and modern hardware.
- Stylish 7' interior doors with modern hardware.
- 5¼" wood baseboards with 2¾" casings (paint finish) except in laundry, bathrooms and storage areas.
- Units on 36th to 39th floor will also include 8' high entry and interior doors; 7¼" baseboard and 2 ¾" casings (paint finish) except in laundry, bathrooms and storage areas; and laminate hardwood floor in foyer, hallway, kitchen, living/ dining area and den. \*

## Gourmet Chef Kitchens

- Your choice of contemporary Signature European made Kitchen Cabinetry from Vendor's samples.\*
- Deep upper cabinet over refrigerator for extra storage space.
- Top-mount stainless steel sink with single lever pull-out faucet.
- Your choice of granite countertops from Vendor's samples.
- Your choice of ceramic/porcelain tile backsplash from Vendor's samples.
- Contemporary central light fixture.
- Energy Star European Style appliance package includes: Fridge, oven, cooktop, dishwasher and microwave.
- Range hood vented outside.

## Spa Inspired Bathrooms

- Your choice of Signature European made vanity cabinetry from Vendor's samples.
- Contemporary mirrored medicine cabinet with integrated lighting.
- Your choice of granite countertop from Vendors samples.
- Top-mount basin and single-lever chrome faucet.
- Your choice of porcelain tile flooring in bathroom and ensuite from Vendor's samples.\*
- Your choice of ceramic/porcelain wall tile surround for shower from Vendor's samples.
- Pressure-balanced shower faucets in all bathrooms in chrome finish.
- Distinctive clear glass shower stall with ceiling light.
- Acrylic shower base for shower stall\*
- Contemporary chrome towel bar or ring, toilet paper holder, and soap dish in shower.\*

## Peace of Mind Safety & Security

- 24-hour Executive Concierge monitors live closed circuit cameras throughout the garage area as well as community access system including direct 2-way communication with push call buttons from parking and entry areas.
- Adjust your suite's temperature, and receive notifications about community events and services remotely through a smartphone app.
- See and speak with guests before allowing them entry into the building through a smartphone app
- Unlock your unit door's smart lock using your smartphone.
- Personally encoded suite intrusion alarm system, with suite door contact and keypad connected to concierge desk for total security.
- Direct 2-way communication with the concierge for added security and convenience for residents.
- Sprinkler system throughout building and individual units.
- In-suite fire alarm and speaker connected to fire annunciation panel.
- Key fob allows effortless access at selected secure building entrance points and amenity areas.
- Garage doors/Gate Arms to be operated by transmitter.
- Energy Saving Comfort System & Metering
- Individually controlled central heating and cooling using Heat Pump system.
- Hot and cold water for heating and cooling to optimize energy savings.
- Suites are individually metered for hydro and for cold water and hot water services.

## In-Suite Laundry

- Dedicated electrical outlet and exterior venting for dryer.
- Stacked washer and dryer in white.

## Electrical Services & Fixtures

- Individual service panel with circuit breakers.
- Suites with terraces will have an outdoor duplex outlet.\*
- White Decora designer series receptacles and switches throughout the suite.
- Distinctive ceiling light fixtures in foyer, hallways, bedrooms, den and walk-in closets.\*
- Capped ceiling light outlet in dining room and living room.\*
- Convenient switch-controlled split outlets in living room.
- One telephone outlet as per Builder's location
- Internet, cable television outlets in bedrooms, living room and den\*
- Outdoor duplex outlet for suites with terrace or balcony\*

## Optional Features available at additional cost\*\*

- Choice of Additional Standard and Upgrade Finishes Available (consult with Design Representative).
- Kitchen island\*

## Notes

- \* Indicates as per suite plan.
- \*\* See Vendor's representative for details
- Where bulkheads are installed and where dropped ceilings are required, the ceiling height will be less than stated, as per Vendor's plans.



F

L

O

TIMES  
GROUP

O

R

P

TIMES  
GROUP  
CORP.  
COM

L

A

N

S